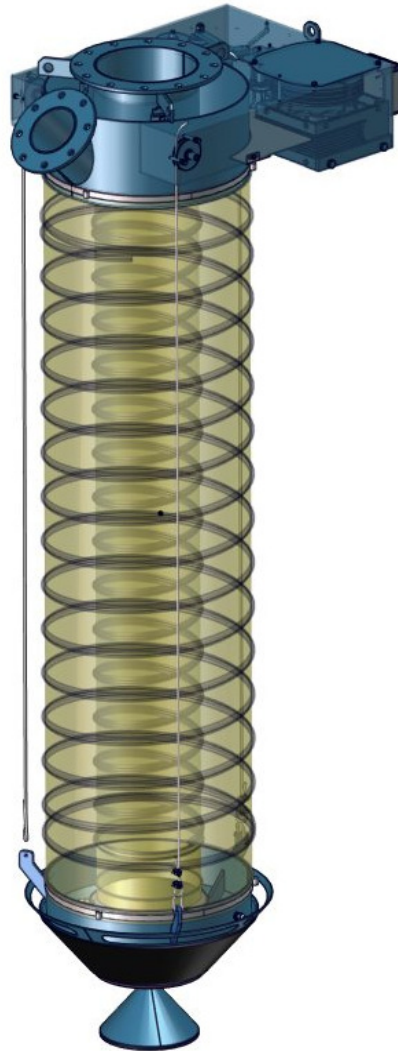




**Datasheet**  
**solids – Filling Chute**  
TLC3-Basic



For dust-free loading of bulk solids from silos or processes into trucks or wagons. Version with dual bellows, outside ropes and dustproof docking system (optional).



**Advantages:**

- Fail-safe due to the electro-pneumatic installation, level sensor, limit switches and complete control unit (options)
- Less operating costs owing to high loading capacity and short holding times of the vehicles
- Can be used globally; suitable for almost all bulk solids
- More advantages see options



**solids solutions group**  
[www.solids.eu](http://www.solids.eu)





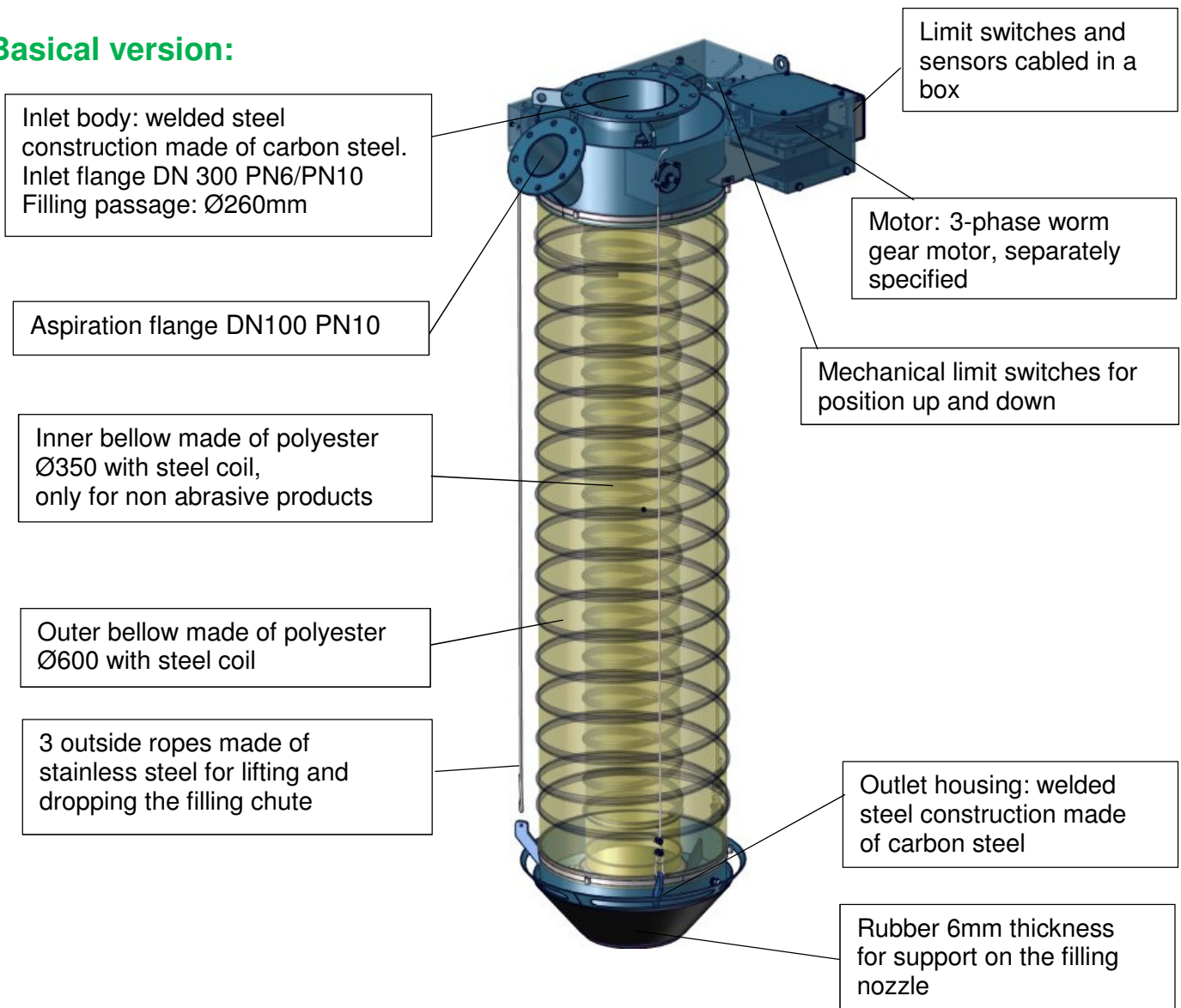
# Datasheet solids – Filling Chute TLC3-Basic



## Operating conditions:

Max. temperature.: 80°C  
 Estimated flow: ~125m³/h.  
 Aspiration air flow: max. 600 m³/h  
 Solid to bulk data:  
 Particle size: powders and granules, medium hardness  
 Fluidity: for products up to poor fluidity

## Basical version:



Surface treatment:  
 Chemical stripped, primer 40 µm of zinc phosphate,  
 painted with 40 µm of 2-component polyurethane, blue RAL5012

approval:	MIGSA	SST	H. Linder
	Date: 4.11.16	Date: 4.11.16	Date: 4.11.16
	Sign: Ru	Sign: Le	Sign: Li

Preliminary modifications reserved



**solids solutions group**  
[www.solids.eu](http://www.solids.eu)



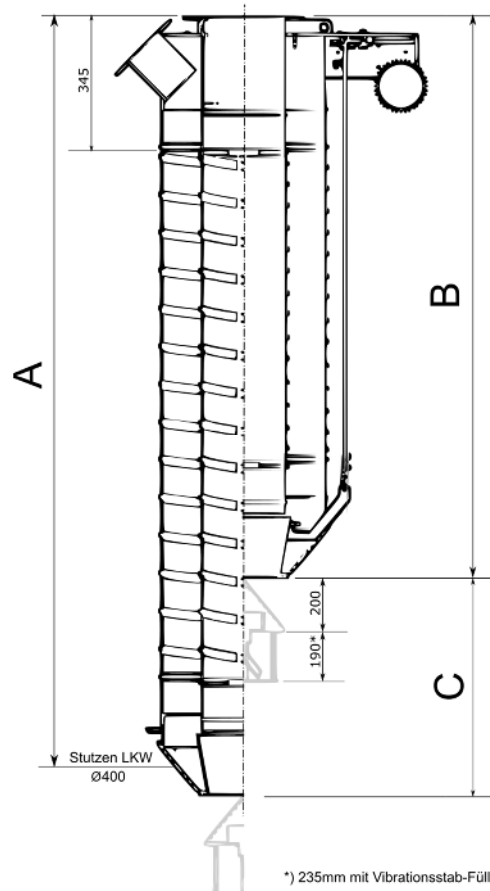


# Datasheet solids – Filling Chute TLC3-Basic



Type	Height to Truck Nozzle A (mm)	Retracted Length B * (mm)	Stroke C * (mm)	Weight (kg)
TLC30301B01	2400	1300	1150	238
TLC30302B01	2590	1350	1290	244
TLC30303B01	2780	1400	1430	250
TLC30304B01	2970	1450	1570	256
TLC30305B01	3160	1500	1710	262
TLC30306B01	3350	1550	1850	268
TLC30307B01	3540	1600	1990	274
TLC30308B01	3730	1650	2130	280
TLC30309B01	3920	1700	2270	286
TLC30310B01	4110	1750	2410	292
TLC30311B01	4300	1800	2550	298
TLC30312B01	4490	1850	2690	304
TLC30313B01	4680	1900	2830	310
TLC30314B01	4870	1950	2970	316
TLC30315B01	5060	2000	3110	322
TLC30316B01	5250	2050	3250	328

(\*) only in basical version



\*) 235mm mit Vibrationsstab-Füllstandsmelder



**solids solutions group**  
[www.solids.eu](http://www.solids.eu)



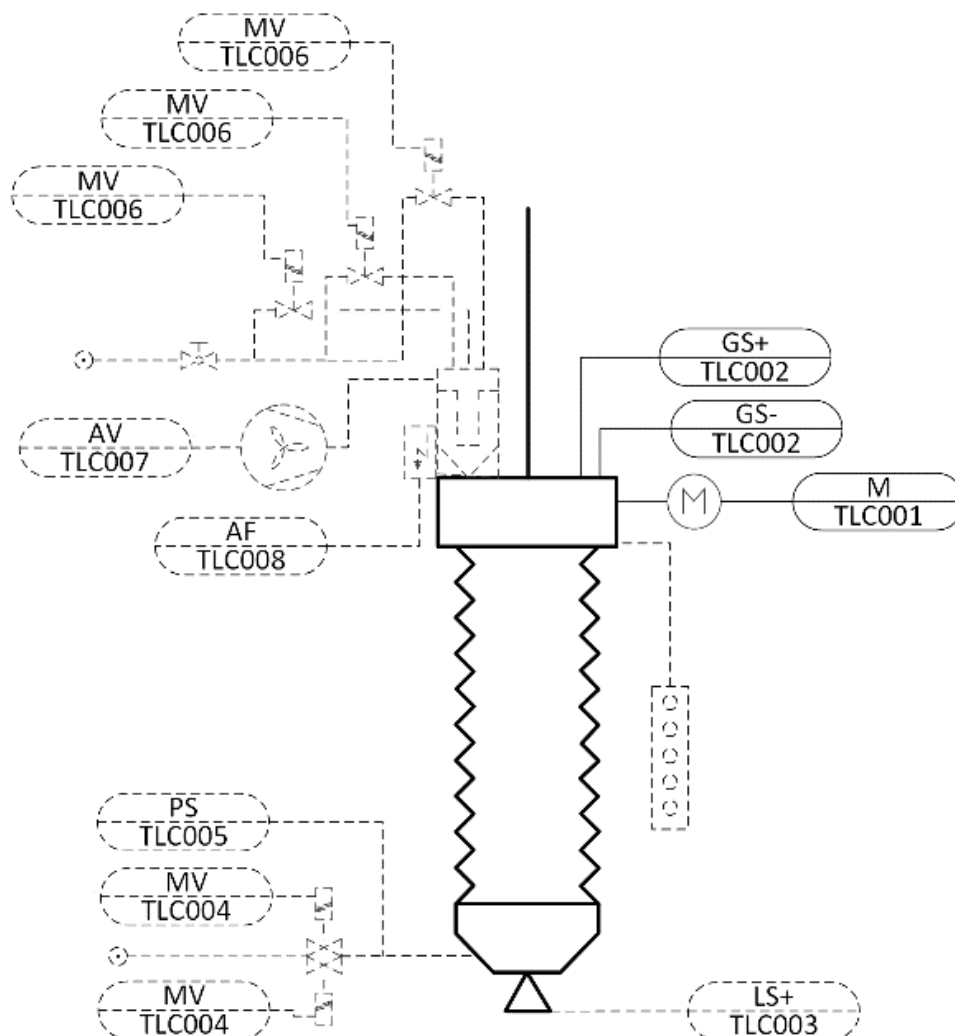


# Datasheet solids – Filling Chute TLC3-Basic



## Electric parts:

	Denomination	Manufacturer	Type
TLC001	worm gear motor	Gyros	MSF110 (14rpm, 1,1kW)
TLC002	mecanical limit switch	Telemecanique	XCK-M115
Level switch			
TLC003	rotating level switch	Filsa	IRP
	vibration level switch	Vega	Vegavib VB61
Pneumatic Installation for inflatable sealing			
TLC004	solenoid valve	Norgren	2623100
TLC005	pressure switch	Danfoss	RT-112
Integrated filter with cleaning and fan			
TLC006	solenoid valve	Autel	AE1818B
TLC007	fan	Sama	CPF-350 (1,5Kw)
TLC008	filter control		



**solids solutions group**  
[www.solids.eu](http://www.solids.eu)



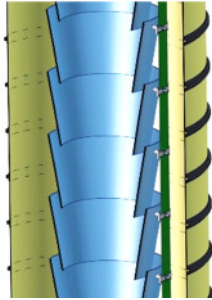


# Datasheet solids – Filling Chute TLC3-Basic



## Options:

1. Bellows with carbon steel cones



2. Bellows with wear-resistant cones

3. With parts in contact with the material made of stainless steel 1.4306

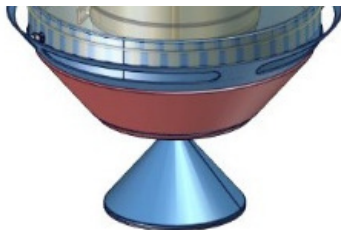
4. With parts in contact with the material made of stainless steel 1.4404

5. With parts in contact with the material made of stainless steel 1.4571

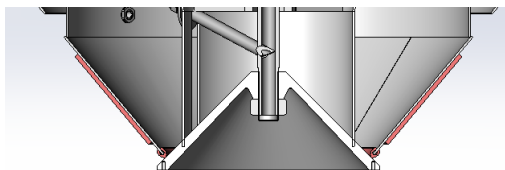
6. Special bellows for high temperature made of viton, suitable for product temperature up to 250°C

7. Bellows material acid- and harmful substance-proof

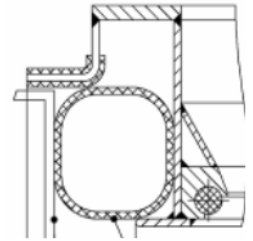
8. With fixed outlet cone



9. With locking cone, prevents product reflow when moving up



10. Dust tight by pneumatically sealed filling nozzle with inflatable sealing, no damage to the environment, no cleaning costs, Low aspiration air capacity, therefore smaller exhaust air filter and smaller fan. Air flow: 150 m<sup>3</sup>/h



11. With rotating blade sensor



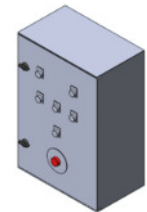
12. With vibrating sensor

13. Suitable for zone 21 inside category 2 acc. ATEX 2014/34/EU

14. Electrical parts of the basic version suitable for Atex Ex II 3D

15. Electrical parts of the basic version suitable for Atex Ex II 2D

16. With control cabinet



17. With pendant station



**solids solutions group**  
[www.solids.eu](http://www.solids.eu)





## Datasheet solids – Filling Chute TLC3-Basic



- 18. With integrated filter, with cleaning by compressed air, 4,5 m<sup>2</sup> filter area
- 19. Fan with max. 700m<sup>3</sup>/h aspiration capacity



- 20. Filter control

### Related documents:

3D-Part: Type.step (example: **TLC303B01**. Step)  
2D-planning drawing: Type.dxf (example: **TLC303B01**. dxf)  
Selection criteria: SG-TLC-TLC3  
Pricelist: PL-TLC3-Basic  
Drawing numbers list: Draw-No-List\_TLC3-Basic



**solids solutions group**  
[www.solids.eu](http://www.solids.eu)

