



# Datasheet

## solids – Precision Dosing Equipment

### PreciDos DSA-Clean



### Operating conditions:

Permissible operating pressure: atmospheric

Max. temperature: 100° C

Bulk solids data:

Particle size: Powdered till granulates, up to medium hardness,

Fluidity: from good up to difficult fluidity

Type	Inlet /Outlet	Height	V / Revolution	Weight
<b>DSA06507C01</b>	250x250 / Ø 65 mm	520 mm	0,07 dm <sup>3</sup>	80 kg
<b>DSA08015C01</b>	250x250 / Ø 80 mm	520 mm	0,15 dm <sup>3</sup>	90 kg
<b>DSA10030C01</b>	250x250 / Ø 100 mm	520 mm	0,30 dm <sup>3</sup>	100 kg

### Basical version:

Body: welded steel construction - stainless steel 1.4306

Helical screw: welded steel construction - stainless steel 1.4306, pitch S = 1/2D in the inlet

Screw shaft extractable, extractor device is optional

Horizontal agitator in the inlet, for uniform filling of spiral channels and for avoid bridging

Bearing in the gearbox and radial shaft sealing rings

Inlet with flange, horizontal outlet without flange

Conveyor length: min. 3 x D from the end of the inlet, max. 1500 mm, easy to dismantle, easy to clean

Suitable for zone 21 inside category 2 according to ATEX94/9/EG

Electrical data: 24V DC, IP65

Drive: direct, directly connected to the motor terminal box

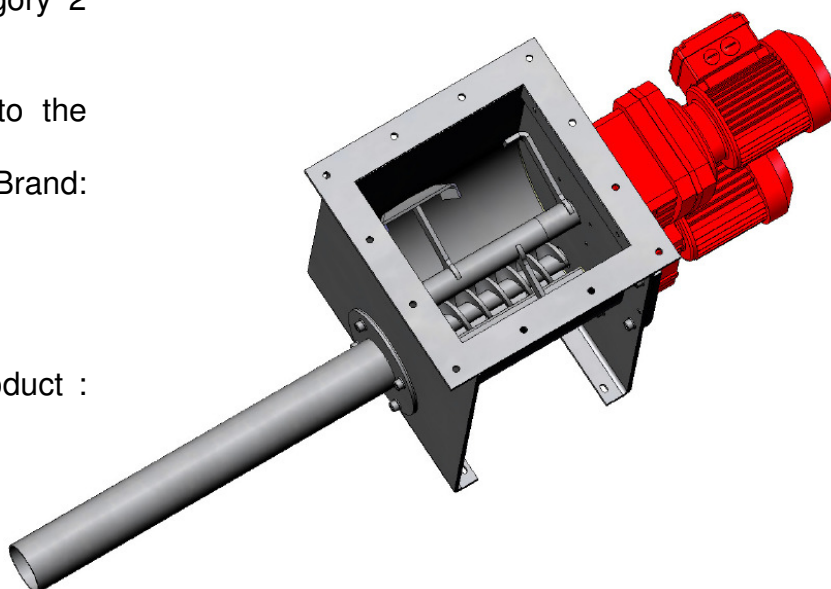
Motor: three-phase geared motor, Brand: SEW, specified separately

Design: with shrink disk and flange

Surface treatment:

Pickled or brushed and passivated

Parts without contact with the product : galvanized



approval:	MIGSA	SST	H. Linder
Date:	Sign:	Date: 11.3.13	Sign: Le
		Date: 11.3.13	Sign: Li

Preliminary modifications reserved



**solids solutions group**  
[www.solids.eu](http://www.solids.eu)





# Datasheet

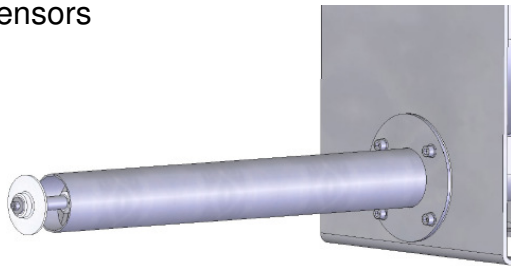
## solids – Precision Dosing Equipment

### PreciDos DSA-Clean

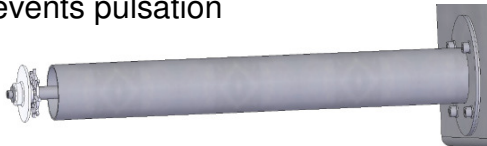


### Options:

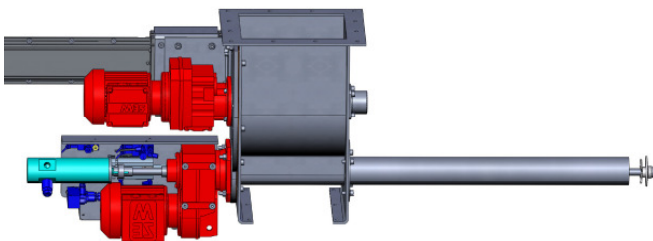
1. Body and screw helix made of 1.4404
2. Body and screw helix made of 1.4571
3. Pneumatic quick-acting flap valve to stop the dosing, including pneumatic installation and 2 solenoid valves, incl. fine flow position of the flap , incl. terminal box IP54 for solenoid valves and 3 proximity sensors



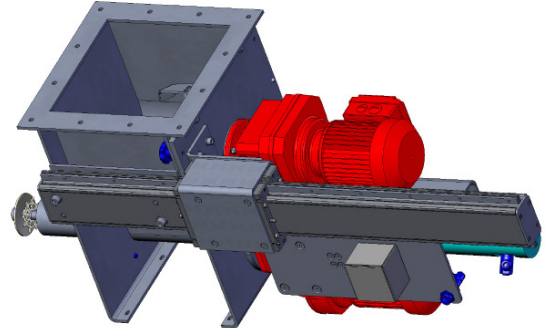
4. With metering star: increases accuracy, prevents pulsation



5. Fine metering star with own drive : For highest metering accuracy. Quick-action flap valve and the metering star are set to the positions OPEN, CLOSE, FEIN POWER and REMETERING. In addition, the Quick-action flap and the the metering star are equipped with their own drive to reach a further refining, which dropping is similar to a spreader .



6. Extraction device with guide rails



7. For food industry according to machinery directive for dry processes, food-version: internal surface quality according to EN 10088 2B with roughness  $Ra \leq 0.8 \mu m$ , throughout weldings  $Ra \leq 3.0 \mu m$ , meets EHEDG guidelines, terminal box for the motor with non-EX connectors, terminal box for solenoid valve and 2 proximity switches with non-EX
8. Electric components outside suitable for Zone 2/22 , without connectors
9. Electric components outside suitable for Zone 1/21 , without connectors
10. Electric components outside suitable for Zone 2/22 , with connectors
11. Electric components outside suitable for Zone 1/21 , with connectors
12. Gap-free throughout weldings

### Related documents:

3D-Part: Type.step (example: **DSA06507C01**. Step)  
 2D-planning drawing: Type.dxf (example: **DSA06507C01**. dxf)  
 selection criteria: SG-DSA  
 Pricelist: PL-DSA-Clean  
 Drawing numbers list: Draw-No-List\_DSA-Clean



solids solutions group  
[www.solids.eu](http://www.solids.eu)

