



# Datasheet solids - Dosing Screw DSC-Clean



## Operating conditions:

permissible operating pressure: <0,5 bar g, product temperature max: 100° C

max./min. ambient temperature: -10 °C ≤ T ≤ 50 °C

bulk solids data:

powder form up to granule form, up to middle hardness

free flowing up to limited flowing products

Type	Inlet / Outlet	Height	V / Round	Weight
<b>DSC06501C01</b>	Ø 150/65 mm	330 mm	0,15 dm <sup>3</sup>	55 kg
<b>DSC08001C01</b>	Ø 200/80 mm	375 mm	0,3 dm <sup>3</sup>	60 kg
<b>DSC10001C01</b>	Ø 200/100 mm	375 mm	0,6 dm <sup>3</sup>	70 kg
<b>DSC12501C01</b>	Ø 200/125 mm	375 mm	1,3 dm <sup>3</sup>	80 kg
<b>DSC15002C01</b>	Ø 250/150 mm	425 mm	1,9 dm <sup>3</sup>	90 kg
<b>DSC20005C01</b>	Ø 250 /200 mm	425 mm	5,0 dm <sup>3</sup>	135 kg

## Basical version:

housing: welding construction – stainless steel

screw helix: welding construction – stainless steel, pitch S=D at inlet

screw extensible, leading rails are option

bearing inside the gear, shaft seal: radial shaft sealing rings

inlet with flange, outlet horizontal without flange

conveying length: min. 3xD from centre inlet, max. 1500 mm, easy removable, easy cleanable

with metering star: increases metering constancy, prevents pulsation

suitable for zone 21 inside category 2 acc. ATEX 2014/34/EU

electrical data: 24V DC, IP65

drive: direct

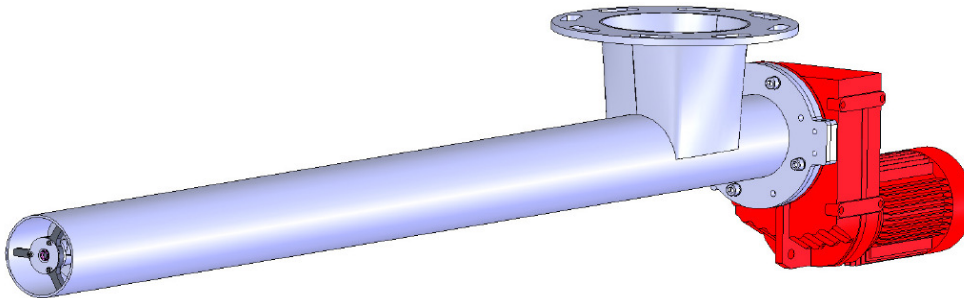
motor: three-phase gearboxmotor, manufacturer: SEW, separately specified

form: slip on gear with flange

motor connection direct at the motor-terminal box

surface treatment:

pickled or brushed and passivated



approval:	MIGSA	SST	H. Linder	
	Datum: 10.10.12	Kurzzeichen: Ru	Datum: 10.10.12	Kurzzeichen: Le
	Datum: 10.10.12	Kurzzeichen: Li		

Preliminary  
Modifications reserved



**solids solutions group**  
[www.solids.eu](http://www.solids.eu)





# Datasheet solids - Dosing Screw DSC-Clean

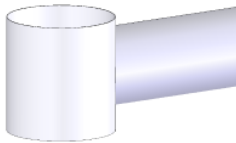


## Options:

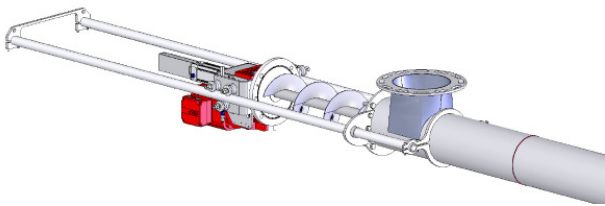
1. housing and screw helix made of 1.4404
2. housing and screw helix made of 1.4571
3. length over 1500 mm, maximum 3000 mm, with bearing support



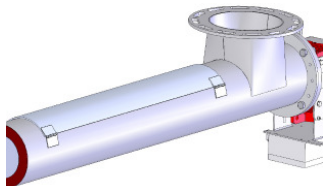
4. outlet part with connection at the housing and vertical round outlet



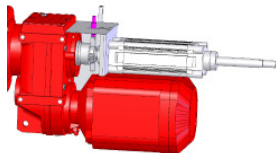
5. pull out device with leading rails



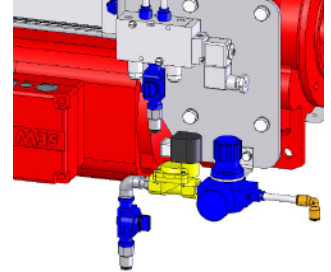
6. inspection and cleaning cover L=1000 mm in the tube, quantity depends on the length, at operation without pressure



7. rotation sensor M12



8. pneumatic installation for sealing/purge air, consisting of 2/2-way solenoid valve, pressure regulator and nozzles



9. motor-terminal box with plug connector Ex-free

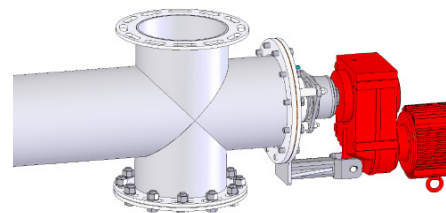
10. electrical parts outside for zone 2/22 without plug connector

11. electrical parts outside for zone 1/21 without plug connector

12. electrical parts outside for zone 2/22 with plug connector

13. electrical parts outside for zone 1/21 with plug connector

14. connection under inlet with flange



15. weldings continuous free of gap

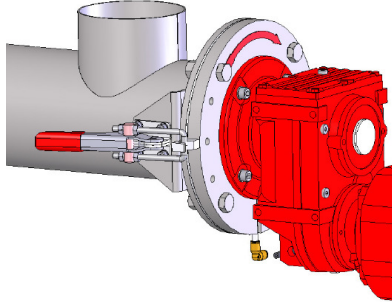




## Datasheet solids - Dosing Screw DSC-Clean



16. bearing plates with quick release, easy removable



17. min. ambient temperature: -20 °C

### Related documents:

3D-Part: Type.step (example : **DSC08001C01**. Step)

2D-planning drawing: Type.dxf (example: **DSC08001C01**. dxf)

selection criteria: SG-DSC-DSCB-DSV-DSVB

pricelist: PL-DSC-Clean

list of drawing numbers: Draw-No-List\_DSC-Clean

Electrical parts list: Electrical Parts List\_DS



**solids solutions group**  
[www.solids.eu](http://www.solids.eu)

