



# Datasheet

## solids – Dosing Screw Batch

### DSCB-Clean



### Operating conditions:

permissible operating pressure: atmospheric, product temperature max: 100° C

bulk solids data:

powder form up to granule form, up to middle hardness, free flowing up to limited flowing products

Type	Inlet / Outlet	Height	V / Round	Weight
<b>DSCB08001C01A</b>	Ø 200/80 mm	395 mm	0,3 dm <sup>3</sup>	60 kg
<b>DSCB10001C01A</b>	Ø 200/100 mm	395 mm	0,6 dm <sup>3</sup>	70 kg
<b>DSCB12501C01A</b>	Ø 200/125 mm	395 mm	1,3 dm <sup>3</sup>	80 kg
<b>DSCB15002C01A</b>	Ø 250/150 mm	445 mm	2,2 dm <sup>3</sup>	90 kg
<b>DSCB20005C01A</b>	Ø 250 /200 mm	445 mm	5,0 dm <sup>3</sup>	135 kg

### Basical version:

housing: welding construction – stainless steel

screw helix: welding construction – stainless steel, pitch S=D at inlet

screw extensible, leading rails are option

bearing inside the gear, shaft seal: radial shaft sealing rings

inlet with flange, outlet horizontal without flange

conveying length: min. 3xD from centre inlet, max. 1500 mm, easy removable, easy cleanable

with pneumatic quick-action flap valve (open-closed) when dosing stops incl. pneumatic and

1 solenoid valve (fine dosing position of the flap valve is option)

with metering star: increases metering constancy, prevents pulsation

suitable for zone 21 inside category 2 acc. ATEX 2014/34/EU, electrical data: 24V DC, IP65

drive: direct

motor connection direct at the motor-terminal box

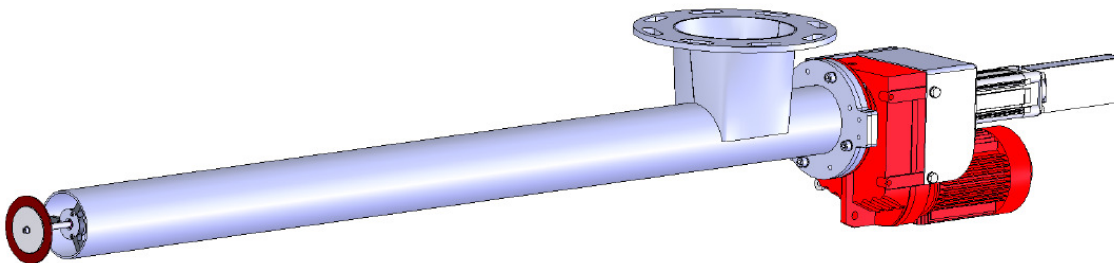
terminal box IP54 for solenoid valves and 2 initiators

motor: three-phase gearmotor, manufacturer: SEW, separately specified

form: slip on gear with shrink disc and flange

surface treatment:

pickled or brushed and passivated, parts non in contact with product: galvanised



Freigabe:	MIGSA	SST	H. Linder		
Datum:	Kurzzeichen:	Datum:	Kurzzeichen:	Datum:	Kurzzeichen:
10.10.12	Ru	10.10.12	Le	10.10.12	Li

Preliminary  
Modifications reserved



**solids solutions group**  
[www.solids.eu](http://www.solids.eu)



# Datasheet

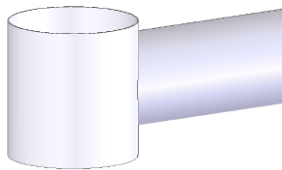
## solids – Dosing Screw Batch

### DSCB-Clean

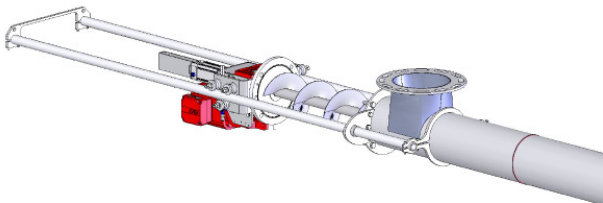


### Options:

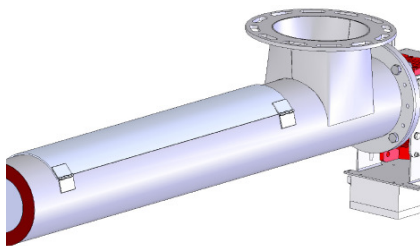
1. housing and screw helix made of 1.4404
2. housing and screw helix made of 1.4571
3. parts non in contact with product : stainless steel 1.4306
4. length over 1500 mm, maximum 3000 mm, with bearing support
5. outlet part with connection at the housing and vertical round outlet



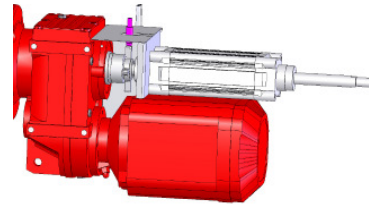
6. locking plate for overpressure max. 0,5 bar g, underpressure min. 0,4 bar abs. (not able to be pulled through)
7. pull out device with leading rails



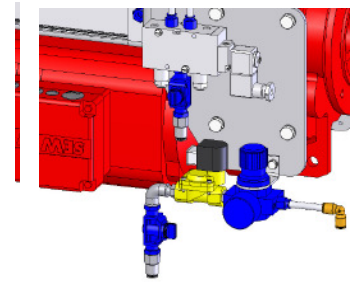
8. inspection and cleaning cover L=1000 mm in the tube, quantity depends on the length, at atmospheric operation conditions



9. rotation sensor M12



10. pneumatic installation for sealing/purge air, consisting of 2/2-wa solenoid valve, pressure regulator and nozzles



11. motor-terminal box with plug connector  
Ex-free terminal box for solenoid valve and 2 initiators with plug connector Ex-free

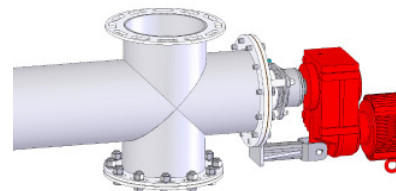
12. electrical parts outside for zone 2/2 without plug connector

13. electrical parts outside for zone 1/21 without plug connector

14. electrical parts outside for zone 2/22 with plug connector

15. electrical parts outside for zone 1/21 with plug connector

16. connection under inlet with flange



17. weldings continuous free of gap





## Datasheet solids – Dosing Screw Batch DSCB-Clean



18. Fine dosing position of the flap valve  
with 1 additional solenoid valve, 1  
additional initiator and a control card

### Related documents:

3D-Part: Type.step (example : **DSCB08001C01**. Step)

2D-planning drawing: Type.dxf (example: **DSCB08001C01**. dxf)

selection criteria: SG-DSC-DSCB-DSV-DSVB

pricelist: PL-DSCB-Clean

list of drawing numbers: Draw-No-List\_DSCB-Clean

Electrical parts list: Electrical Parts List\_DS



**solids solutions group**  
[www.solids.eu](http://www.solids.eu)