



# Datasheet

## solids - Dosing Screw Batch

### DSCB-Hygienic



### Operating conditions:

permissible operating pressure: atmospheric, product temperature max: 100° C

bulk solids data:

powder form up to granule form, up to middle hardness, free flowing up to limited flowing products

Type	Inlet / Outlet	Height	V / Round	Weight
<b>DSCB08001Y01A</b>	Ø 200/80 mm	375 mm	0,3 dm <sup>3</sup>	60 kg
<b>DSCB10001Y01A</b>	Ø 200/100 mm	375 mm	0,6 dm <sup>3</sup>	70 kg
<b>DSCB12501Y01A</b>	Ø 200/125 mm	375 mm	1,3 dm <sup>3</sup>	80 kg
<b>DSCB15002Y01A</b>	Ø 250/150 mm	425 mm	2,2 dm <sup>3</sup>	90 kg
<b>DSCB20005Y01A</b>	Ø 250 /200 mm	425 mm	5,0 dm <sup>3</sup>	135 kg

### Basical version:

according EU-regulations, directives and EHEDG-guidelines

housing: welding construction – stainless steel 1.4306

screw helix: welding construction – stainless steel 1.4306, pitch S=D at inlet

screw extensible, leading rails are option

bearing inside the gear, shaft seal: radial shaft sealing rings FDA-approved, with sealing/purge air connection

pneumatic installation for sealing/purge air, consisting of 2/2-way solenoid valve, pressure regulator and nozzles

inlet with centering flange, outlet horizontal without flange

conveying length: min. 3xD from centre inlet, max. 1500 mm, easy removable, easy cleanable

with pneumatic quick-action flap valve (open-closed) when dosing stops incl. pneumatic and

1 solenoid valve (fine dosing position of the flap valve is option)

with metering star: increases metering constancy, prevents pulsation

hygienic design for food, pharma, cosmetics, chemistry

easy to dismantle, easy to clean, free of dead zones and free of gaps

in contact with product (inside) surface quality Ra < 0,8 µm

outside pickled or brushed and passivated

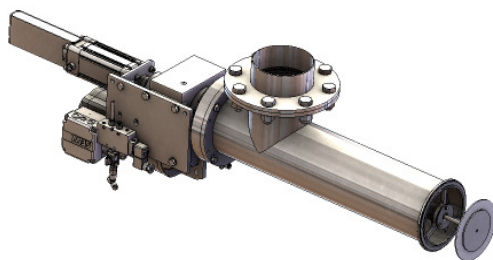
suitable for zone 21 inside category 2 acc. ATEX 2014/34/EU, electrical data: 24V DC, IP65

drive: direct, motor connection direct at the motor-terminal box

terminal box IP54 for solenoid valves and 2 initiators

motor: three-phase gearboxmotor, manufacturer: SEW, separately specified

form: slip on gear with flange



Preliminary  
Modifications reserved



solids solutions group  
[www.solids.eu](http://www.solids.eu)



# Datasheet

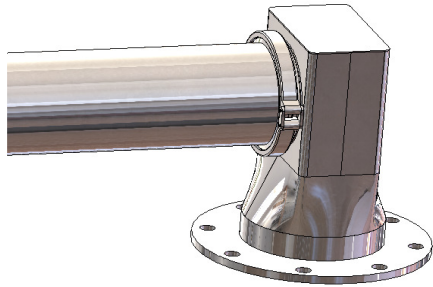
## solids - Dosing Screw Batch

### DSCB-Hygienic

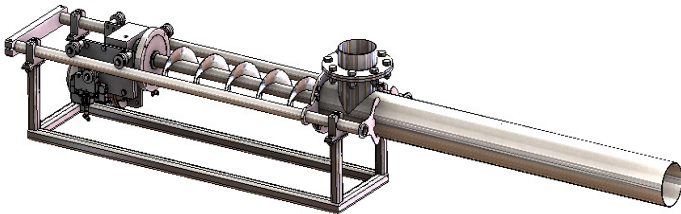


### Options:

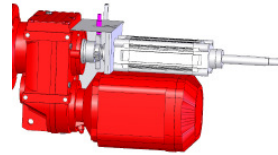
1. housing and screw helix made of 1.4404
2. housing and screw helix made of 1.4571
3. electropolished
4. outlet part with connection at the housing and vertical round outlet



5. pull out device with leading rails



6. rotation sensor M12



7. motor-terminal box with plug connector Ex-free

8. electrical parts outside for zone 2/22 without plug connector

9. electrical parts outside for zone 1/21 without plug connector

10. electrical parts outside for zone 2/22 with plug connector

11. electrical parts outside for zone 1/21 with plug connector

12. Fine dosing position of the flap valve with 1 additional solenoid valve, 1 additional initiator and a control card

approval:	MIGSA	SST	H. Linder
	Datum:	Kurzzeichen:	Datum: Kurzzeichen:

### Related documents:

3D-Part: Type.step (example : **DSCB08001Y01**. Step)  
 2D-planning drawing: Type.dxf (example: **DSCB08001Y01**. dxf)  
 selection criteria: SG-DSC-DSCB-DSV-DSVB  
 pricelist: PL-DSCB-Hygienic  
 list of drawing numbers: Draw-No-List\_DSCB-Hygienic  
 Electrical parts list: Electrical Parts List\_DS



**solids solutions group**  
[www.solids.eu](http://www.solids.eu)

