



# Datasheet

## solids – Vibration Dosing Screw Batch

### DSVB-Basic



### Operating conditions:

permissible operating pressure: atmospheric, product temperature max: 100° C

bulk solids data:

powder form up to granule form, up to middle hardness, difficult up to very difficult flowing

Type	Inlet / Outlet	Height	V / Round	Weight
<b>DSVB08001B01A</b>	Ø 200/80 mm	395 mm	0,15 dm <sup>3</sup>	60 kg
<b>DSVB10001B01A</b>	Ø 200/100 mm	395 mm	0,3 dm <sup>3</sup>	70 kg
<b>DSVB12501B01A</b>	Ø 200/125 mm	395 mm	0,65 dm <sup>3</sup>	80 kg
<b>DSVB15001B01A</b>	Ø 250/150 mm	445 mm	1,1 dm <sup>3</sup>	90 kg
<b>DSVB20002B01A</b>	Ø 250 /200 mm	445 mm	2,5 dm <sup>3</sup>	135 kg

### Basical version:

housing: welding construction – carbon steel

screw helix: welding construction – carbon steel, pitch  $S=1/2D$  at inlet

screw extensible, leading rails are option

bearing inside the gear, shaft seal: radial shaft sealing rings

inlet with flange, outlet horizontal without flange

conveying length: min.  $3xD$  from centre inlet, max. 1500 mm, easy removable, easy cleanable

with pneumatic quick-action flap valve (open-closed) when dosing stops incl. pneumatic and

1 solenoid valve (fine dosing position of the flap valve is option)

with metering star: increases metering constancy, prevents pulsation

suitable for zone 21 inside category 2 acc. ATEX 2014/34/EU , electrical data: 24V DC, IP65

drive: direct

motor connection direct at the motor-terminal box

terminal box IP54 for solenoid valves and 2 initiators

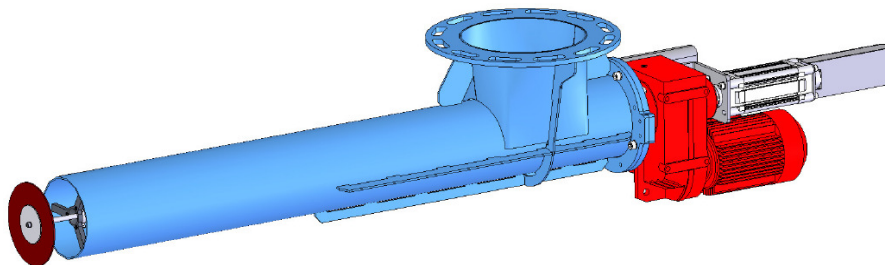
motor: three-phase gearboxmotor, manufacturer: SEW, separately specified

form: slip on gear with shrink disc and flange

surface treatment: with chemical descaling,

base painting 40 µm zinc-phosphate, final painting 40 µm 2-components-polyurethan, RAL5012

blue



approval:	MIGSA	SST	H. Linder			
	Datum: 10.10.12	Kurzzeichen: Ru	Datum: 10.10.12	Kurzzeichen: Le	Datum: 10.10.12	Kurzzeichen: Li

Preliminary  
Modifications reserved



**solids solutions group**  
[www.solids.eu](http://www.solids.eu)

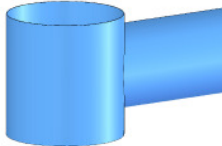
# Datasheet

## solids – Vibration Dosing Screw Batch DSVB-Basic

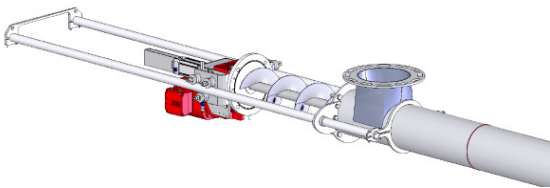


### Options:

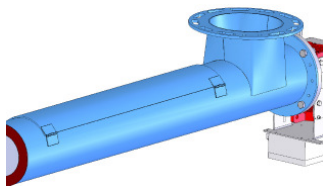
1. screw helix made of 1.4306
2. length over 1500 mm, maximum 3000 mm, with bearing support
3. outlet part with connection at the housing and vertical round outlet



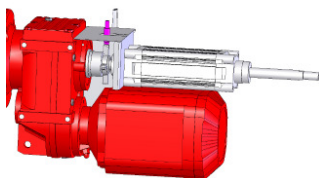
4. locking plate for overpressure max. 0,5 bar g, underpressure min. 0,4 bar abs. (not able to be pulled through)
5. pull out device with leading rails



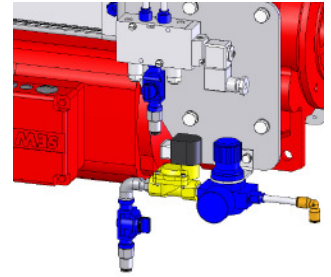
6. inspection and cleaning cover L=1000 mm in the tube, quantity depends on the length, at atmospheric operation conditions



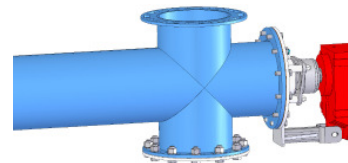
7. rotation sensor M12



8. pneumatic installation for sealing/purge air, consisting of 2/2-way solenoid valve, pressure regulator and nozzles



9. motor-terminal box with plug connector  
Ex-free terminal box for solenoid valve and 2 initiators with plug connector Ex-free
10. electrical parts outside for zone 2/22 without plug connector
11. electrical parts outside for zone 1/21 without plug connector
12. electrical parts outside for zone 2/22 with plug connector
13. electrical parts outside for zone 1/21 with plug connector
14. pitch  $S=D$  continuous, only allowed without fine dosing and length max.  $4xD$  (from centre inlet)
15. connection under inlet with flange



solids solutions group  
[www.solids.eu](http://www.solids.eu)



**Datasheet**  
**solids – Vibration Dosing Screw Batch**  
**DSVB-Basic**



16. Fine dosing position of the flap valve  
with 1 additional solenoid valve, 1  
additional initiator and a control card

**Related documents:**

3D-Part: Type.step (example : **DSVB08001B01**. Step)

2D-planning drawing: Type.dxf (example: **DSVB08001B01**. dxf)

selection criteria: SG-DSC-DSCB-DSV-DSVB

pricelist: PL-DSVB-Basic

list of drawing numbers: Draw-No-List\_DSVB-Basic

Electrical parts list: Electrical Parts List\_DS



**solids solutions group**  
[www.solids.eu](http://www.solids.eu)