



Datasheet

solids - Microfeeding Rotary Valve

MDS-Basic



Operating conditions:

Permissible operating pressure: 0,9 bar abs. till <1,5 bar g

Max. temperature: 150° C

Bulk solids data:

Particle size: Powdered < 0,2 mm, up to medium hardness,

Fluidity: from good up to medium fluidity

Type	Inlet / Outlet	Height	V / Revolution	Weight
MDS15032B01	Ø 150 mm	225 mm	0,323 dm ³	80 kg
MDS25069B01	Ø 250 mm / 250x250 mm	380 mm	0,690 dm ³	100 kg
MDS25168B01	Ø 250 mm / 250x250 mm	515 mm	1,685 dm ³	150 kg

Basical version

Housing: Grey cast iron GG25

Rotor: welded steel construction made of carbon steel

Micro-dosing pockets, rigid blades

External bearing

Shaft seal: packing gland

With sealing/purge air connection

Suitable for zone 21 inside Category 2 according to ATEX 94/9/EC

Drive: direct

Motor: three-phase geared motor

Brand: SEW, separately specified

Design: Shaft mounted gear with torque arm

Surface treatment:

Sandblasted,

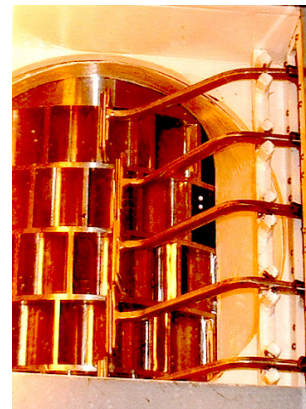
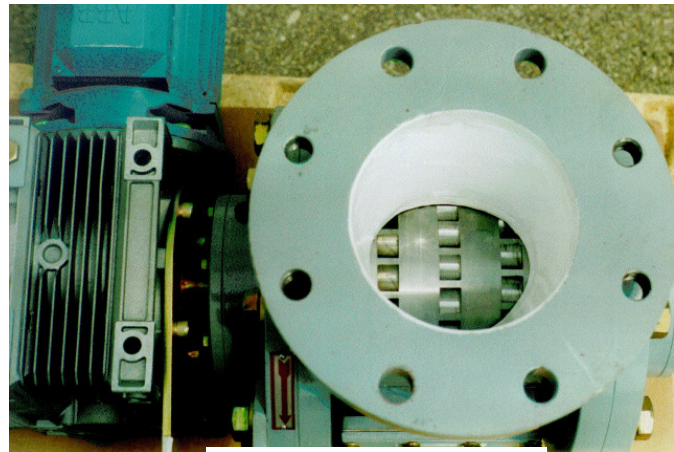
Parts in contact with the product: preservation

10 µm with MEP100

Primer 40 micron zinc phosphate

Top coat 40 microns 2-component

Polyurethane, RAL5012 blue



approval:	MIGSA	SST	H. Linder
Date:	Sign:	Date: 11.3.13	Sign: Le
		Date: 11.3.13	Sign: Li

Preliminary
modifications reserved



solids solutions group
www.solids.eu



Datasheet

solids - Microfeeding Rotary Valve

MDS-Basic



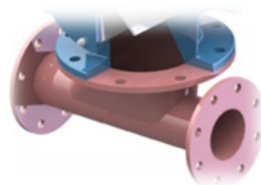
Options:

1. Rotor with reduced volume made of carbon steel

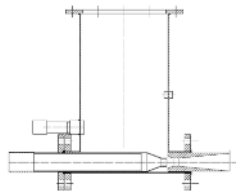
Type	V / Rev.
MDS15032B01	0,073 dm ³
	0,024 dm ³
	0,012 dm ³
MDS25168B01	1,235 dm ³
	0,987 dm ³

2. Housing made of stainless steel 1.4408, rotor made of 1.4306 according to the selected rotor options
Surface treatment:
Glass bead blasted and passivated

3. Blowing shoe for pneumatic conveying made of carbon steel

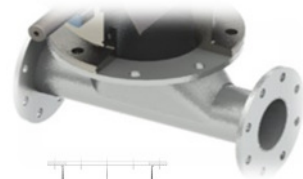


4. Blowing shoe with injector for pneumatic conveying made of carbon steel

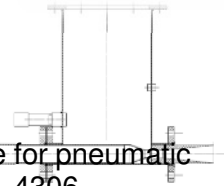


5. Blowing shoe with guide plate for pneumatic conveying of carbon steel

6. Blowing shoe for pneumatic conveying of stainless steel 1.4306



7. Blowing shoe with injector for pneumatic conveying of stainless steel 1.4306



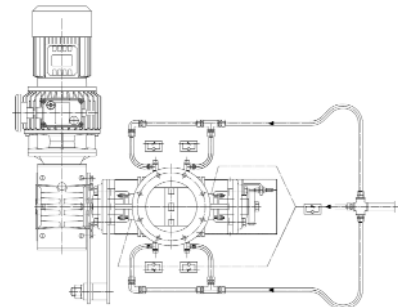
8. Blowing shoe with guide plate for pneumatic conveying of stainless steel 1.4306

9. With M12 inductive turning detector



10. Pneumatic installation for air sealing / purge consisting of 2/2-way solenoid valve, pressure regulator and nozzle.

11. Purging with installation for inlet



solids solutions group
www.solids.eu



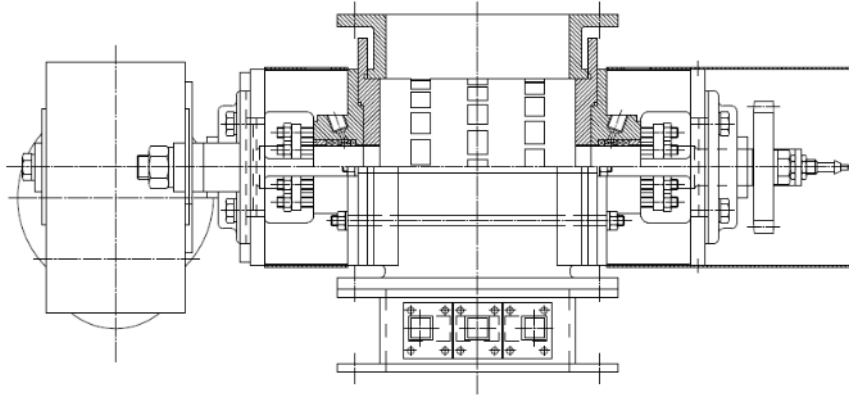
Datasheet

solids - Microfeeding Rotary Valve

MDS-Basic



12. 10 bar g pressure shock resistant housing and special bearing shields with additional drag-bar, special height 290 mm because of the separate scraper housing, only by type MDS150, with water pressure test of the cast housing, without protection system according to ATEX 94/9/EC, not tested by a notified body



13. Anti adherent coating in the inlet and outlet

Related documents:

3D-Part: Type.step (example: **MDS15032B01**. Step)

2D-planning drawing: Type.dxf (example: **MDS15032B01**. dxf)

selection criteria: SG-MDS

Pricelist: PL-MDS-Basic



solids solutions group
www.solids.eu