



Datasheet

solids - Trough Screw Conveyor

DST-Clean



Operating conditions:

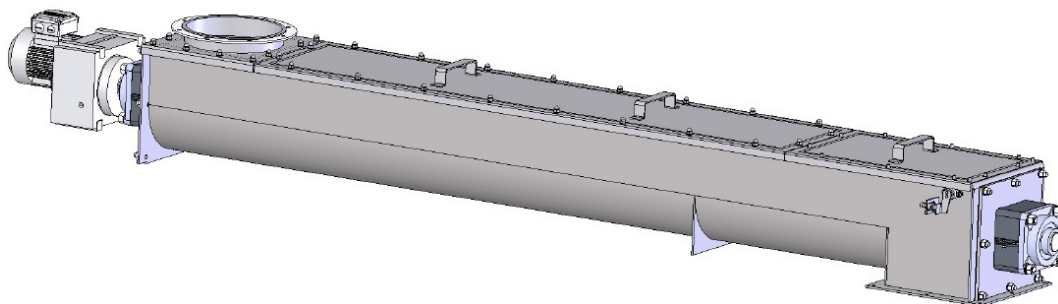
Permissible operating pressure: <0,1 bar g
 Max. temperature: 100° C
 Max./min. ambient temperature: -10 °C ≤ T ≤ 50 °C
 Bulk solids data:
 Powdered till granular, up to medium hardness
 free flowing up to limited flowing products

Type	Inlet/Outlet	Height	V / Revolution	Weight*
DST15001C01	150x250/150x200 mm	250 mm	1,6 dm ³	250 kg
DST20004C01	200x300/200x250 mm	300 mm	3,9 dm ³	300 kg
DST25008C01	250x350/250x300 mm	350 mm	8,4 dm ³	350 kg
DST30014C01	300x450/300x500 mm	400 mm	14 dm ³	400 kg
DST35020C01	350x600/350x400 mm	500 mm	20 dm ³	450 kg

* middle length

Basical version:

Trough-shaped housing: steel welded construction - stainless steel 1.4306 (DIN) / 304L (AISI)
 Screw: steel welded construction - stainless steel 1.4306 (DIN) / 304L (AISI), pitch S = D in the inlet
 Double-sided, external bearing
 Shaft seal: O-ring and slide washer
 Inlet with flange, outlet vertical with flange with sealing/purge air connection
 Conveyor length: min. 650 mm from the middle of inlet, max. 8000 mm
 suitable for zone 21 inside category 2 according ATEX 2014/34/EU
 Drive: direct
 Motor: three-phase geared motor, brand: SEW, specified separately
 Design: slip on gear with torque arm
 Surface treatment:
 Pickled or brushed and passivated



Control	MIGSA	SST	H. Linder	
Date:	Sign:	Date:	Sign:	Date:
		11.3.13	Le	11.3.13
				Li

Preliminary
modifications reserved



solids solutions group
www.solids.eu



Datasheet

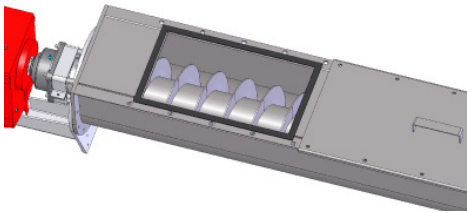
solids - Trough Screw Conveyor

DST-Clean

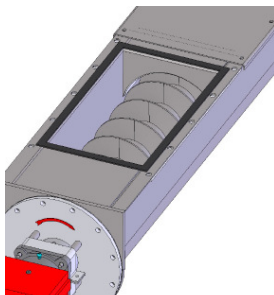


Options:

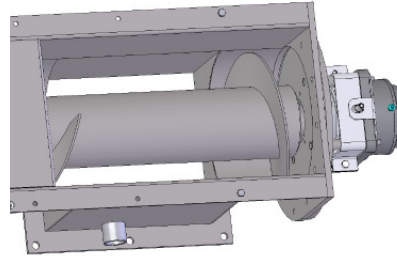
1. Housing and screw made of 1.4404 (DIN) / 316L (AISI)
2. Housing and screw made of 1.4571 (DIN) / 316Ti (AISI)
3. Additional inlet / outlet with flange
4. Pitch $S=1/2D$ in the inlet



5. Progressive pitch in the inlet
6. Filling device above the helix after the inlet: prevents shoot-through or flowing back (by inclined screw) of the product



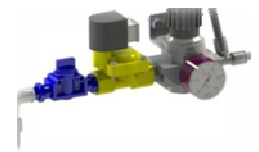
7. Opposite helix at the outlet



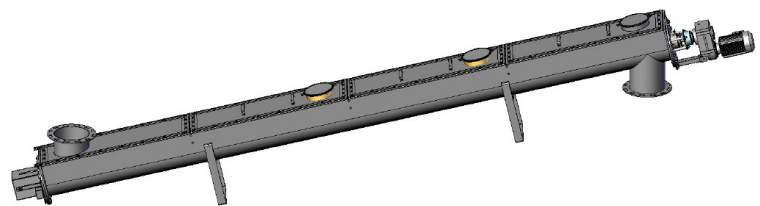
8. Connection under inlet with flange
9. With M12 inductive turning detector



10. Pneumatic installation for sealing/purge air, consisting of 2/2-way solenoid valve, pressure regulator and nozzle.



11. Electrical components outside zone 2/22
12. Electrical components outside zone 1/21
13. Gap-free continuous welding
14. assembly angular rising



15. min. ambient temperature: -20 °C

Related documents:

3D-Part: Type.step (example: **DST15001C01**. Step)

2D-planning drawing: Type.dxf (example: **DSC15001C01**. dxf)

selection criteria: SG-DSR-DST

pricelist: PL-DST-Clean

List of drawing numbers: Draw-No-List_DST-Clean



solids solutions group
www.solids.eu