



# Datasheet

## Solids- Slide Gate

### FSE-Basic



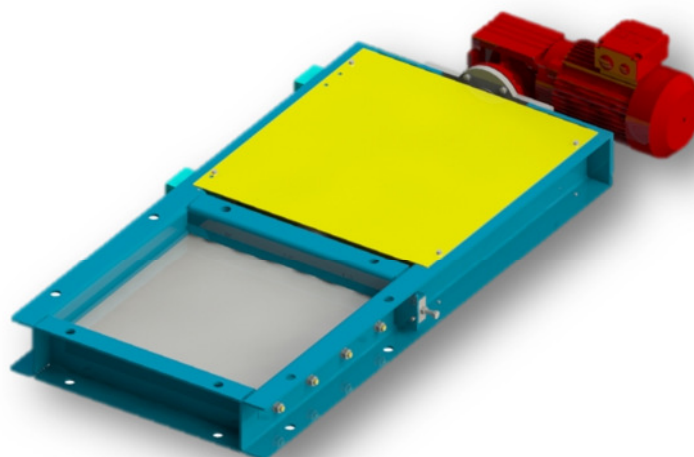
### Operating conditions:

- Dust tight. Max. temperature.:250°C (with special surface treatment)
- Min/Max ambient temperature:  $-20^{\circ}\text{C} \leq T \leq +50^{\circ}\text{C}$
- Solid to bulk data: Particle size: powders and granules up to 20mm, medium hardness  
Fluidity: for products up to very difficult flowing

| Type      | Input/output | Height | Weight |
|-----------|--------------|--------|--------|
| FSE015B01 | 150x150 mm   | 100 mm | 37 Kg  |
| FSE020B01 | 200x200 mm   | 100 mm | 41 Kg  |
| FSE025B01 | 250x250 mm   | 100 mm | 45 Kg  |
| FSE030B01 | 300x300 mm   | 100 mm | 52 Kg  |
| FSE035B01 | 350x350 mm   | 100 mm | 57 Kg  |
| FSE040B01 | 400x400 mm   | 100 mm | 66 Kg  |
| FSE045B01 | 450x450 mm   | 100 mm | 73 Kg  |
| FSE050B01 | 500x500 mm   | 100 mm | 80 Kg  |
| FSE060B01 | 600x600 mm   | 100 mm | 90 Kg  |
| FSE070B01 | 700x700 mm   | 120 mm | 160 Kg |
| FSE080B01 | 800x800 mm   | 120 mm | 200 Kg |

### Basical version:

- Structure made of carbon steel.
- Flanges with holes according datasheet.
- Shear plate made of carbon steel
- Cover plate carbon steel.
- Aramid fiber gasket with PTFE
- Directly coupled motorgear until FSE60B01. In FSE070B01 and FSE080B01 with chain and pinions
- Surface treatment: chemical stripping, primer 40 µm of zinc phosphate, painted with 40 µm of 2-component polyurethane, Blue RAL5012



This is not an equipment according ATEX-directive 2014/34/EU, but in contact with product (inside) usable in the zones 20-21-22. Additional electrical parts must be approved for the chosen ATEX-zone.

|          |       |       |            |
|----------|-------|-------|------------|
| approval | MIGSA | SST   | Mr. Linder |
| date:    | sign: | date: | sign:      |

Preliminary  
Modifications reserved



**solids solutions group**  
[www.solids.eu](http://www.solids.eu)

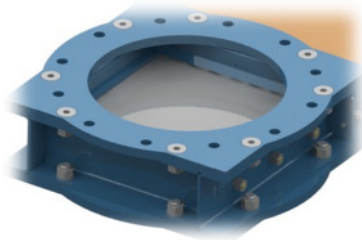


## Datasheet Solids- Slide Gate FSE-Basic

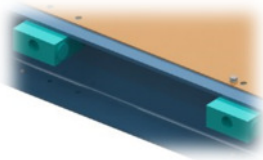


### Options:

1. Shear plate of wear-resistant steel.
2. Shear plate of 1.4306 stainless steel
3. With round inlets and outlets with PN6 flange
4. With round inlets and outlets with PN10 flange



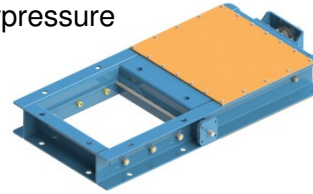
5. Mechanical limit switches



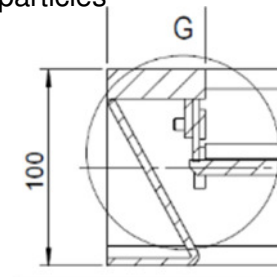
6. Inductive detectors M12



7. Airtight at 0,5 bar and minus 100 mbar underpressure



8. parts in contact with product made of stainless steel 1.4306
9. parts in contact with product made of stainless steel 1.4404
10. Coarse product baffle to prevent from jam coarse particles



11. With electrical components Atex Ex II 2D
12. With electrical components Atex Ex II 3D

### Associated documents:

3D-part: Type.step (e.g. : **FSE020B01**. Step)  
2D layout drawing: Type.dxf (e.g. : **FSE020B01**. dxf)  
Selection guide: SG-FSP-FSH-FSE-DKA-DKH  
Price list: PL-FSE-Basic  
list of drawing numbers: Draw-No-List\_FSE-Basic



**solids solutions group**  
[www.solids.eu](http://www.solids.eu)