



Datasheet Solids- Slide Gate FSH-Basic



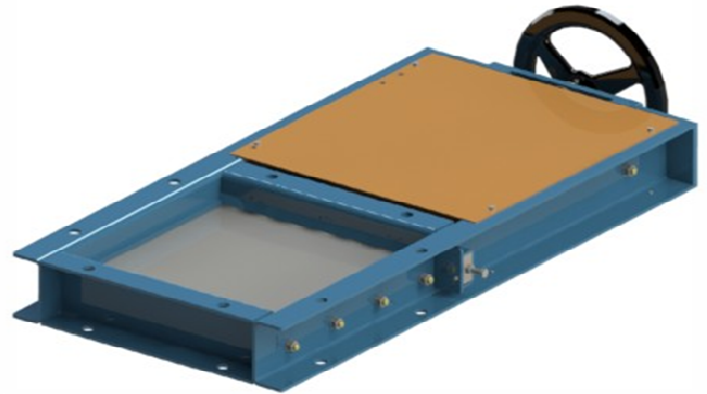
Operating conditions:

- Dust tight. Max. temperature: 250°C
- Max./min. ambient temperature: $-30\text{ °C} \leq T \leq 50\text{ °C}$
- Solid to bulk data: Particle size: powders and granules up to 20mm, medium hardness
Fluidity: for products up to very difficult flowing

Type	Input/Output	Height	Weight
FSH015B01	150x150 mm	100 mm	26 kg
FSH020B01	200x200 mm	100 mm	30 kg
FSH025B01	250x250 mm	100 mm	34 kg
FSH030B01	300x300 mm	100 mm	40 kg
FSH035B01	350x350 mm	100 mm	45 kg
FSH040B01	400x400 mm	100 mm	51 kg
FSH045B01	450x450 mm	100 mm	58 kg
FSH050B01	500x500 mm	100 mm	63 kg
FSH060B01	600x600 mm	100 mm	77 kg
FSH070B01	700x700 mm	120 mm	120 kg
FSH080B01	800x800 mm	120 mm	150 kg

Basical version:

- Structure made of carbon steel.
- Flanges with holes according Dimension sheet
- Shear plate made of carbon steel
- Cover plate carbon steel.
Aramid fiber gasket with PTFE
- With handwheel
- Surface treatment: chemical stripping, primer
40 µm of zinc phosphate, painted with 40 µm
of 2-component polyurethane, Blue RAL5012



The device described below does not have any source of ignition. Therefore, it does not apply the ATEX Directive 94/9 / EC and are authorized to contain potentially explosive atmospheres (zones 20-21-22) inside. According to the guide of the ATEX Directive 94/9 / EC, It should not be marked on the plate.

The electrical equipment must be specified separately and duly certified for the corresponding ATEX zone.

approval	MIGSA	SST	Mr. Linder
date:	sign:	date:	sign:

Preliminary
Modifications reserved



solids solutions group
www.solids.eu



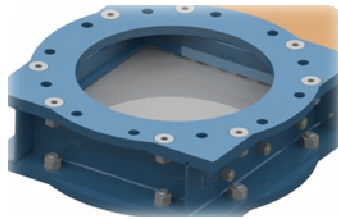
Datasheet Solids- Slide Gate FSH-Basic



Options:

1. Shear plate of wear-resistant steel
2. Shear plate of 1.4306 stainless steel

3. With round inlets and outlets with PN6 flange

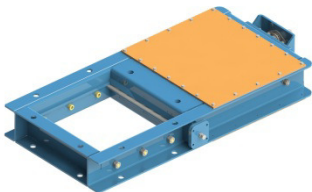


4. With round inlets and outlets with PN10 flange

5. With wheel and chain drive



6. Airtight at 0,5 bar and minus 100 mbar underpressure



7. with 2 inductive detectors M12



8. Parts in contact with product made of 1.4306

9. Parts in contact with product made of 1.4404

10. electrical parts outside for zone 2/22

11. electrical parts outside for zone 1/21

Associated documents:

3D-part: Type.step (e.g. : **FSH020B01**. Step)

2D layout drawing: Type.dxf (e.g. : **FSH020B01**. dxf)

Selection guide: SG-FSP-FSH-DKA-DKH

Price list: PL-FSH-Basic

list of drawing numbers: Draw-No-List_FSH-Basic



solids solutions group
www.solids.eu