



Datasheet solids – Hopper Scale BSG-Clean



High precision weighing and dosing of bulk solids, also several components per batch

Operation purpose:

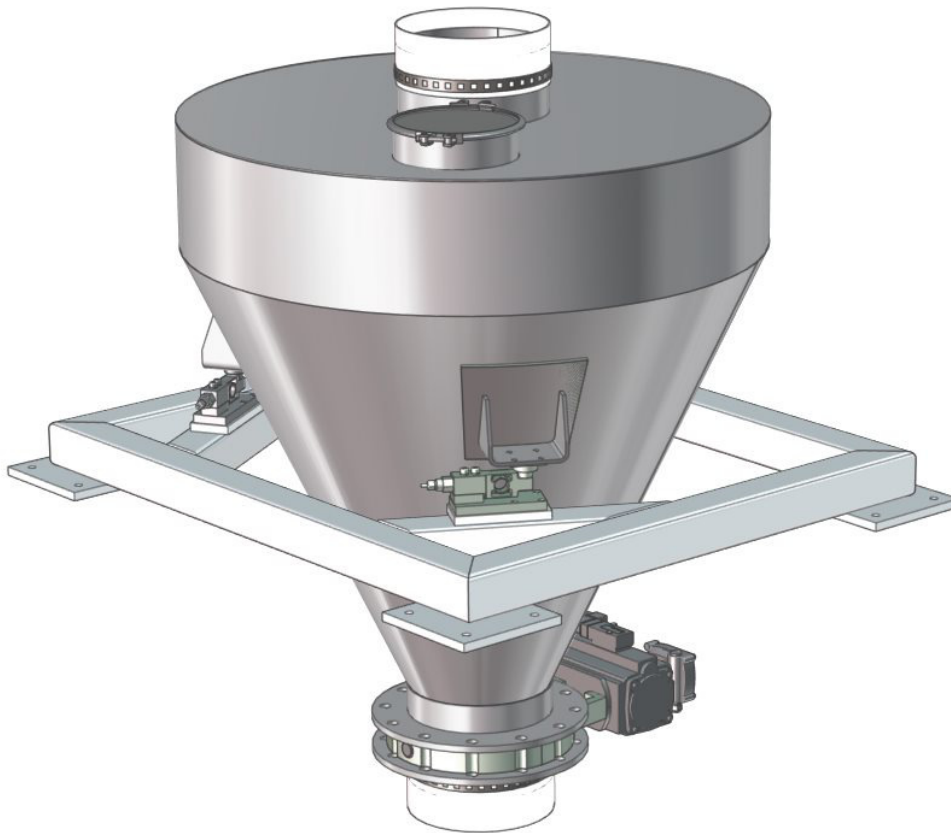
Weighing hopper complete equipped.

Batch operation, optional continuous operation.

Filling of bulk solid under atmospheric conditions, composing batches.

Weighing of the filled in quantity.

Then discharge of the bulk solid, batch dosing.



- **Safe and trouble-free automatic metering**
- **High precision weighing, also small batches**
- **Also in constricted rooms**
- **High process safety since all components are handled automatically**
- **Low-dust material handling**
- **Complete emptying**

approval:	MIGSA	SST	H. Linder
Date:	Sign:	Date: 25.7.2016	Sign: Le
		Date: 25.7.2016	Sign: Li

Preliminary
modifications reserved

solids solutions group
www.solids.eu



Datasheet solids – Hopper Scale BSG-Clean



Operating conditions:

- Permissible operating pressure: >0,9 bar absolute until 100 mbar overpressure
- Product temperature max.: 65° C
- Max/Min ambient temperature: -10 °C ≤ T ≤ 50 °C
- Bulk solids data: Powdered till granulates, every hardness, up to limited flowing products

Type	Inlet Ø / Outlet Ø	Height	geom. Volume	Weighing range netto	Weight
BSG01207C01	200 mm *	1050 mm	125 dm ³	300 kg	230 kg
BSG02507C01	200 mm *	1360 mm	250 dm ³	300 kg	260 kg
BSG03507C01	200 mm *	1600 mm	350 dm ³	1000 kg	280 kg
BSG04510C01	250 mm *	1420 mm	450 dm ³	1000 kg	300 kg
BSG06510C01	250 mm *	1680 mm	650 dm ³	1000 kg	350 kg
BSG09010C01	250 mm *	2000 mm	900 dm ³	1000 kg	400 kg
BSG10013C01	350 mm *	1750 mm	1000 dm ³	2000 kg	450 kg
BSG15013C01	350 mm *	2100 mm	1500 dm ³	2000 kg	500 kg
BSG20013C01	350 mm *	2500 mm	2000 dm ³	4000 kg	550 kg
BSG25018C01	350 mm *	2300 mm	2500 dm ³	4000 kg	600 kg
BSG40018C01	350 mm *	2900 mm	4000 dm ³	6000 kg	700 kg
BSG55018C01	350 mm *	3500 mm	5500 dm ³	10000 kg	800 kg

* different outlet Ø see options

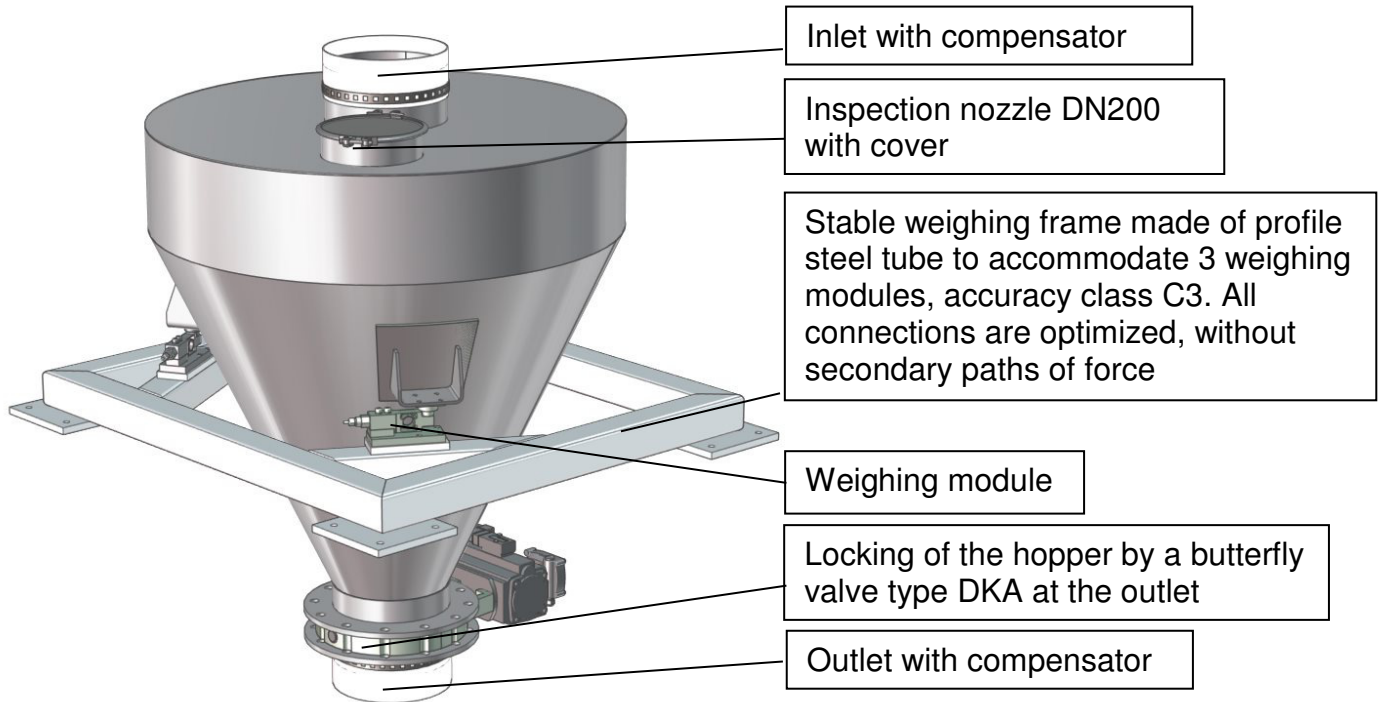


Datasheet solids – Hopper Scale BSG-Clean



Basical version:

- Welded steel construction – stainless steel 1.4306 (DIN) / 304L (AISI)
- Surface treatment of the stainless steel parts: Pickled or brushed and passivated
- Surface treatment of carbon steel parts : Chemical stripped, primer 40 µm zinc phosphate, top coat 40 µm 2-component polyurethane, RAL5012 blue



This is not an equipment according ATEX-directive 2014/34/EU, but in contact with product (inside) usable in the zones 20-21-22. Additional electrical parts must be approved for the chosen ATEX-zone.

Electrical parts:

Denomination	Manufacturer	Type
3 load cells	Flintec	SB4, SB6
Electrical parts for the butterfly valve: see datasheet by the manufacturer		

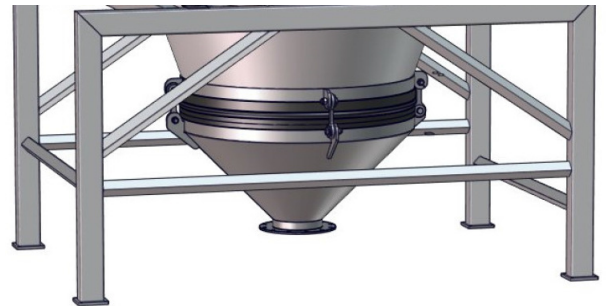
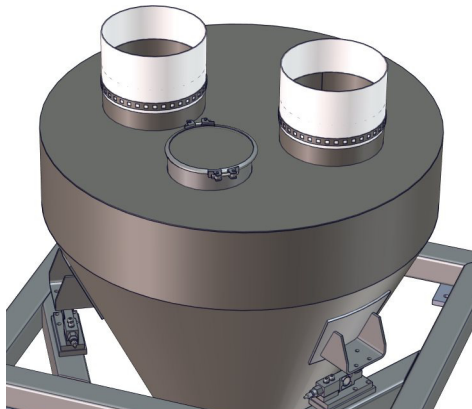


Datasheet solids – Hopper Scale BSG-Clean

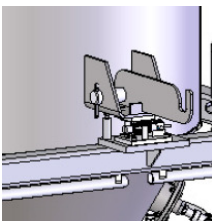


Options:

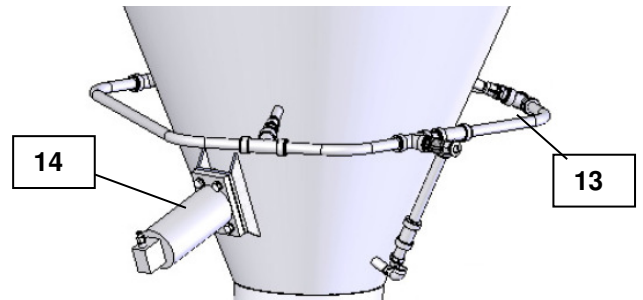
1. Parts in contact with the product made of 1.4404 (DIN) / 316L (AISI)
2. Parts in contact with the product made of 1.4571 (DIN) / 316Ti(AISI)
3. Electrical components outside suitable for Zone 2/22, with earthing
4. Electrical components outside suitable for Zone 1/21, with earthing
5. 1 more inlet with compensator
9. Wiring to terminal box
10. Full level indicator as additional overflow protection
11. Anti-adhesion coating inside
12. Discharge aid: vibration cone type EVS for difficult flowing products, directly welded, see separate datasheet



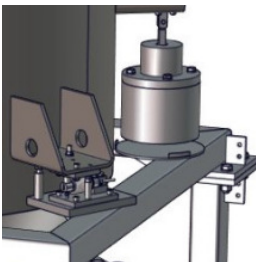
6. Different inlet \varnothing
7. Different outlet \varnothing
- 8.1 Device and balance with test weights



13. Discharge aid: ventilation with vibra-pads including pneumatic installation



- 8.2 Device and automatic balance with test weights



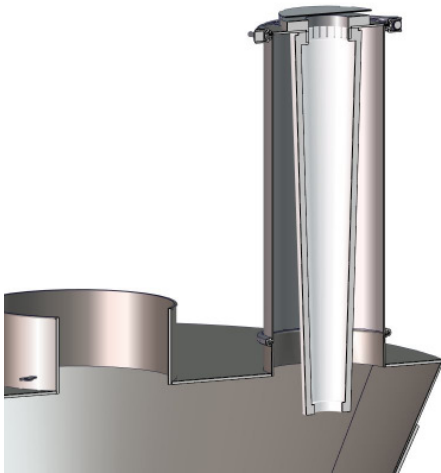
14. Pneumatic knocker on the cone with his installation



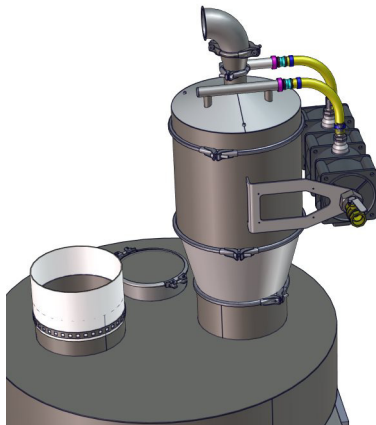
Datasheet solids – Hopper Scale BSG-Clean



15. Filter, without cleaning



16. Filter, with cleaning device



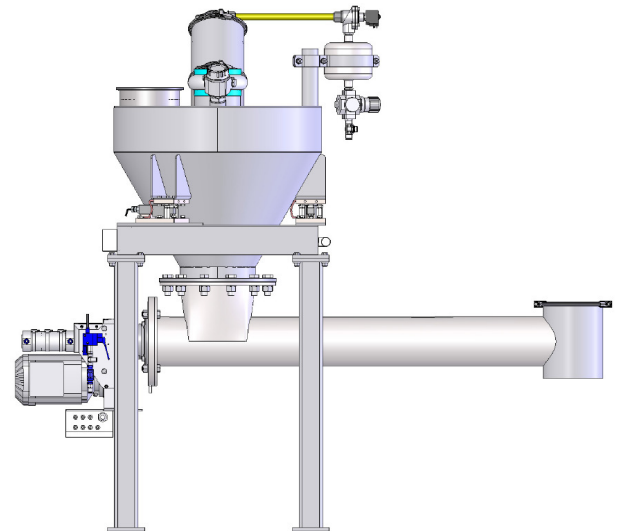
17. Weldings continuously free of gaps

18. Connection set for aspiration on site, consisting of connection nozzle to a hopper, compensator, T-pipe, leak air valve with suction filter and support on a lower framework

19. Lower framework for supporting the scale on a foundation on site, max. 2m high

20. Loss-in-weight scale batch:
No butterfly valve at the hopper outlet, with metering screw type DSCB-Basic, see separate datasheet, batch operation

Option number	Metering screw type
20.1	DSCB08001C01
20.2	DSCB10001C01
20.3	DSCB12501C01
20.4	DSCB15002C01
20.5	DSCB20005C01





Datasheet solids – Hopper Scale BSG-Clean



21. Loss-in-weight scale batch:

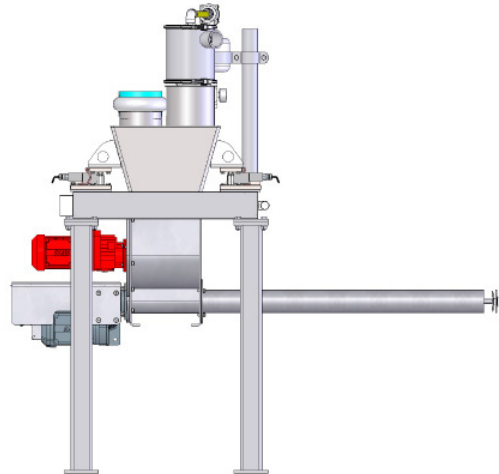
No butterfly valve at the hopper outlet, with vibration metering screw type DSVB-Basic, mounted at the optional vibration cone, see separate datasheet, batch operation

Option number	Metering screw type
21.1	DSVB08001C01
21.2	DSVB10001C01
21.3	DSVB12501C01
21.4	DSVB15002C01
21.5	DSVB20005C01

22. Loss-in-weight scale batch:

No butterfly valve at the hopper outlet, with metering screw type DSA-Clean PreciDos, see separate datasheet, batch operation

Option number	Metering screw type
22.1	DSA06507C01
22.2	DSA08015C01
22.3	DSA10030C01



23. Loss-in-weight scale batch:

No butterfly valve at the hopper outlet, with metering screw type DSR-Basic, see separate datasheet, batch operation

Option number	Metering screw type
23.1	DSR08001B01
23.2	DSR10001B01
23.3	DSR12501B01
23.4	DSR15002B01
23.5	DSR20004B01
23.6	DSR25009B01
23.7	DSR30015B01

Related documents:

3D-Part: Type.step (example: **BSG04510C01**. Step)

2D-planning drawing: **BSG04510C01**. dxf)

Selection criteria: SG-BSG

Pricelist: PL-BSG-Clean

Draw-No-List_BSG-Clean

solids solutions group
www.solids.eu