



# Datasheet

## solids – Rotating Bowl Scale

### GiroScale GSC-Clean



### Operating conditions:

Permissible operating pressure: atmospheric

Max. temperature: 70° C

Bulk solids data:

Particle size: Powdered till granulates, up to medium hardness,

Fluidity: from good up to difficult fluidity

Type	Scale bowl diameter	Height	Vessel volume	Max. weighing range	Weight
<b>GSC1010C01A</b>	Ø 265 mm	200 mm	10 dm <sup>3</sup>	10 kg	15 kg
<b>GSC1020C01A</b>	Ø 265 mm	200 mm	10 dm <sup>3</sup>	20 kg	20 kg
<b>GSC1620C01A</b>	Ø 300 mm	250 mm	16 dm <sup>3</sup>	20 kg	20 kg
<b>GSC2020C01A</b>	Ø 315 mm	300 mm	20 dm <sup>3</sup>	20 kg	20 kg
<b>GSC2530C01A</b>	Ø 355 mm	285 mm	25 dm <sup>3</sup>	30 kg	20 kg
<b>GSC3230C01A</b>	Ø 355 mm	335 mm	32 dm <sup>3</sup>	30 kg	30 kg
<b>GSC5050C01A</b>	Ø 408 mm	438 mm	50 dm <sup>3</sup>	50 kg	30 kg

### Basical version:

Closed housing made of stainless steel 1.4306 to accommodate the entire mechanical and electrical components, with screwed cover

The weighing vessel is designed as a rotating bowl, made of stainless steel 1.4306, pluggable, can be mounted / dismantled without tools

Load cell with support plate for the connection to the rotating bowl

Pneumatical rotational actuator, with solenoid valve

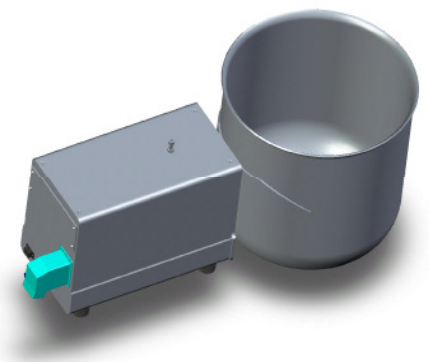
2 proximity switches for filling and emptying positionen

Pneumatically-activated test weight incl. solenoid valve, for a correct control of the scale function

All electronic functions and signals wired to terminal and plugged outwardly to the controller and weighing device

Surface treatment:

Pickled or brushed and passivated



approval:	MIGSA	SST	H. Linder	
	Date:	Sign:	Date:	Sign:
			11.3.13	Le
			11.3.13	Li

Preliminary modifications reserved

**solids solutions group**  
[www.solids.eu](http://www.solids.eu)



# Datasheet

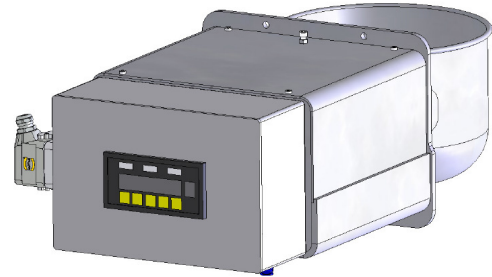
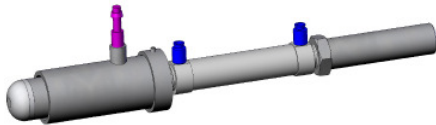
## solids – Rotating Bowl Scale

### GiroScale GSC-Clean



#### Options:

1. Housing made of 1.4404
2. Rotating bowl made of 1.4404
3. Housing made of 1.4571
4. Rotating bowl made of 1.4571
5. Inside of the rotating bowl with special coating
6. ---
7. Pneumatic knocker to incorporate into the dust housing for difficult and adhesive bulk solids, which knocks on the rotating bowl when it is in emptying position
8. Weighing terminal, integrated into the additional housing, with display and membrane keyboard  
Features: coarse to fine metering, stability control, tolerance control, control of the weight increase for switching the discharge help, nominal value and tolerance window for the test weight, automatic follow-up optimization, automatic dosing at lower dosage, process field bus, control of inputs and outputs, analogue output with nominal speed set point for the metering device



9. Electric components suitable for Zone 2/22
10. Electric components suitable for Zone 1/21

#### Related documents:

3D-Part: Type.step (example: **GSC1020C01** . Step)

2D-planning drawing: Typ.dxf (Beispiel: **GSC1020C01**. dxf)

Selection criteria: SG-GSC

Pricelist: PL-GSC-Clean

Drawing numbers list: Draw-No-List\_GSC-Clean