



Datasheet solids- Rotary Valve SRVC-Basic



Operating conditions:

max. pressure: 0,9 bar abs. up to <0,1 bar g, max. product temperature: 100° C

Bulk solid data:

powder form, up to medium hardness,

free flowing up to limited flowing products

Type	Inlet / Outlet-Ø	Height	Volume / Round	Weight
SRVC1505B01	Ø 150 mm	320 mm	5 dm ³	90 kg
SRVC2010B01	Ø 200 mm	375 mm	10 dm ³	120 kg
SRVC2520B01A	Ø 250 mm	450 mm	20 dm ³	170 kg

Basical version:

housing: cast iron GG25

rotor: welding construction – carbon steel,
extensible, easy to dismantle

8 pockets, inelastic blades

outside bearings

shaft seal: on drive side radial shaft sealing
ring, opposite to drive closed cover plate
without shaft throughput

suitable for zone 20 inside category 1 acc.
ATEX94/9/EC

with type examination test by a notified body

drive: direct

motor: three-phase gearboxmotor

manufacturer: SEW, degree of protection IP55,

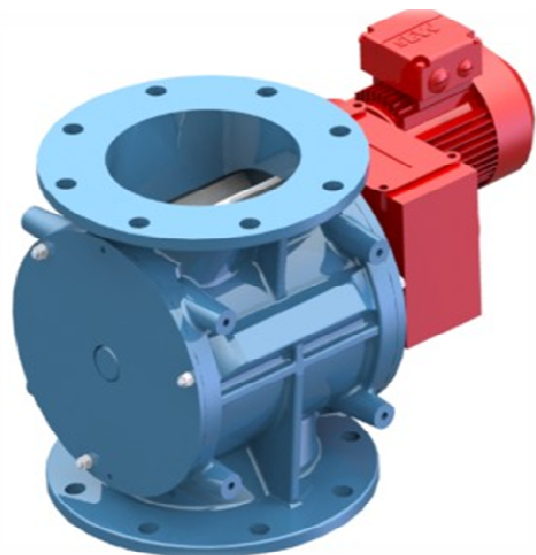
thermal class 155 (F), separately specified

form: slip on gear with flange

Surface treatment:

sand blasted

primer 40 µm of zinc phosphate, painted with 40 µm
of 2-component polyurethane, blue RAL5012



approval	MIGSA		SST		H. Linder	
	Date: 10.10.12	sign: Ru	Date: 10.10.12	sign: Le	Date: 10.10.12	sign: LI



solids solutions group
www.solids.eu





Datasheet solids- Rotary Valve SRVC-Basic



Options:

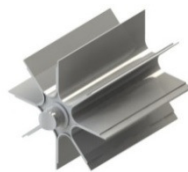
1. Rotor with adjustable polyurethane blades

Size	V / turn.
SRVC150	4 dm ³
SRVC200	7 dm ³
SRVC250	16 dm ³



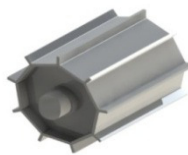
2. Rotor with rounded carbon steel blades

Size	V / turn.
SRVC150	4 dm ³
SRVC200	9,3 dm ³
SRVC250	19 dm ³



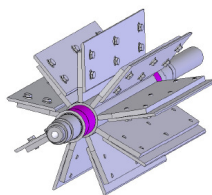
3. Rotor with reduced volume, about half of the standard volume made of carbon steel

Size	V / turn.
SRVC150	2,4 dm ³
SRVC200	4,7 dm ³
SRVC250	9,7 dm ³



4. Rotor with adjustable blades made of carbon steel

Size	V / turn.
SRVC150	4 dm ³
SRVC200	7 dm ³
SRVC250	9,7 dm ³



5. Rotor made of stainless steel 1.4306 (DIN) / 304L(AISI) according the selected rotor-options

6. Inlet for granules, grain size >500 µm, made of carbon steel incl. connection parts assembled



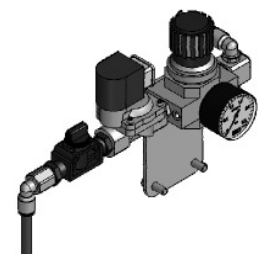
7. Suction shoe for pneumatic transport made of carbon steel incl. connection parts assembled



8. Standstill monitoring with star and sensor



9. blowing device for cleaning the pockets, incl. pneumatic installation



solids solutions group
www.solids.eu

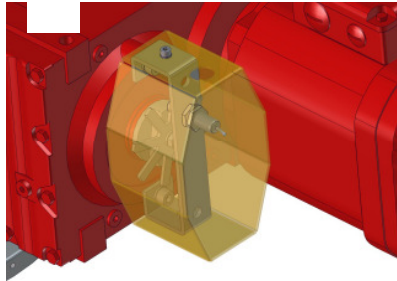




Datasheet solids- Rotary Valve SRVC-Basic



10. Dosing-stop by switching-off-positioning of the rotor with 8-finger-star and sensor



11. electrical parts outside for zone 2/22
12. electrical parts outside for zone 1/21

Related documents:

3D-Part: Type.step (example : **SRVC15005B01**. Step)
2D-planning drawing: Type.dxf (example: **SRVC15005B01**. dxf)
selection criteria: SG- ZRS-SRV-DBS
pricelist: PL-SRVC-Basic
list of drawing numbers: Draw-No-List_SRVC-Basic



solids solutions group
www.solids.eu

