



Datasheet Solids- Rotary Valve SRVS-Basic



Operating conditions:

max. pressure: 0,9 bar abs. up to <1,5 bar g, max. product temperature: 150° C

Bulk solid data:

powder form, up to medium hardness,

free flowing up to limited flowing products

Type	Inlet / Outlet-Ø	Height	Volume / Round	Weight
SRVS1505B01	Ø 150 mm	320 mm	5 dm ³	125 kg
SRVS2010B01	Ø 200 mm	375 mm	10 dm ³	160 kg
SRVS2520B01A	Ø 250 mm	450 mm	20 dm ³	210 kg

Basical version:

housing: cast iron GG25

rotor: welding construction – carbon steel

8 pockets, inelastic blades

outside bearings

shaft seal: radial shaft sealing rings

with sealing/purge air connection

suitable for zone 20 inside category 1 acc.

ATEX94/9/EC

with type examination test by a notified body

drive: direct

motor: three-phase gearboxmotor

manufacturer: SEW, separately specified

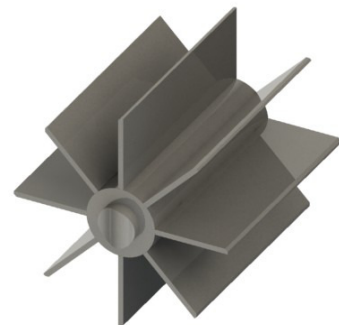
form: slip on gear with torque arm

Surface treatment:

sand blasted

primer 40 µm of zinc phosphate, painted with 40 µm

of 2-component polyurethane, blue RAL5012



approval	MIGSA		SST		H. Linder	
	Date:	sign:	Date:	sign:	Date:	sign:
	10.10.12	Ru	10.10.12	Le	10.10.12	LI

Preliminary
Modifications reserved

S.S.T.-Schüttguttechnik Maschinenbau GmbH
Lechwiesenstr. 21, 86899 Landsberg / Lech
Tel. 0049 (0)8191-3359-50 / Fax 0049 (0)8191-3359-55
Mail info@solids-service.de www.solids.de




Datasheet Solids- Rotary Valve SRVS-Basic



Options:

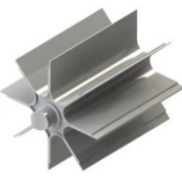
1. Rotor with adjustable polyurethane blades

Size	V / turn
SRVS150	4 dm ³
SRVS200	7 dm ³
SRVS250	16 dm ³



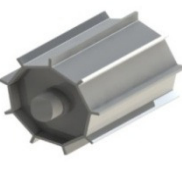
2. Rotor with rounded carbon steel blades

Size	V / turn
SRVS150	3,2 dm ³
SRVS200	7 dm ³
SRVS250	13 dm ³



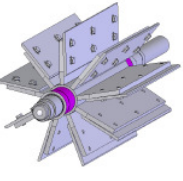
3. Rotor with reduced volume, about half of the standard volume made of carbon steel

Size	V / turn
SRVS150	2,4 dm ³
SRVS200	4,7 dm ³
SRVS250	9,7 dm ³



4. Rotor with adjustable blades made of carbon steel

Size	V / Turn
SRVS150	4 dm ³
SRVS200	7 dm ³
SRVS250	16 dm ³



5. Rotor made of stainless steel 1.4306 according the selected rotor-options

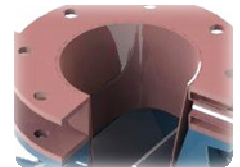
6. Inlet for granules, grain size >500 µm, made of carbon steel incl. connection parts assembled



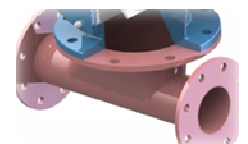
7. Leakage air collector with granule inlet, grain size > 500 µm, made of carbon steel steel incl. connection parts assembled



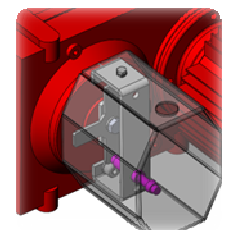
8. Leakage air collector for non-granules, made of carbon steel steel incl. connection parts assembled



9. Blowing shoe for pneumatic transport made of carbon steel steel incl. connection parts assembled



10. Standstill monitoring with star and sensor



S.S.T.-Schüttguttechnik Maschinenbau GmbH

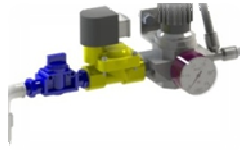
Lechwiesenstr. 21, 86899 Landsberg / Lech
Tel. 0049 (0)8191-3359-50 / Fax 0049 (0)8191-3359-55
Mail info@solids-service.de www.solids.de



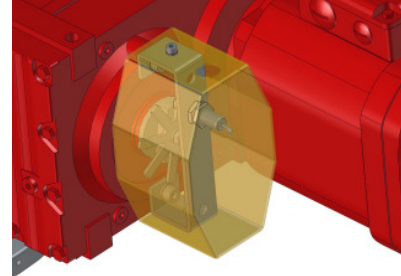
Datasheet Solids- Rotary Valve SRVS-Basic



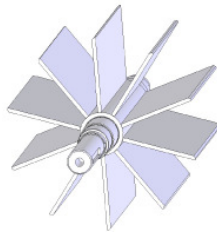
11. Pneumatic installation for sealing/purge air, consisting of 2/2-way solenoid valve, pressure regulator and nozzles



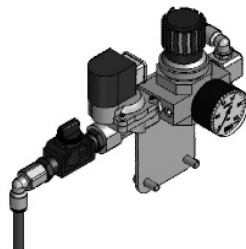
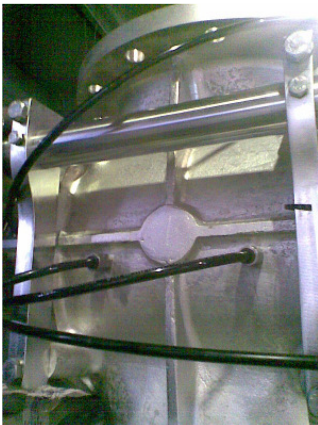
14. Dosing-stop by switching-off-positioning of the rotor with 8-finger-star and sensor



12. Rotor with 10 pockets for difference pressure > 500 mbar



13. Blowing device for cleaning the pockets, incl. pneumatic installation



Related documents:

3D-Part: Type.step (example : **SRVS15005B01**. Step)

2D-planning drawing: Type.dxf (example: **SRVS15005B01**. dxf)

selection criteria: SG- ZRS-SRV-DBS

pricelist: PL-SRVS-Basic

list of drawing numbers: Draw-No-List_SRVS-Basic

S.S.T.-Schüttguttechnik Maschinenbau GmbH

Lechwiesenstr. 21, 86899 Landsberg / Lech

Tel. 0049 (0)8191-3359-50 / Fax 0049 (0)8191-3359-55

Mail info@solids-service.de www.solids.de