



Datasheet solids- Rotary Valve SRVS-Clean



Part of **HOSOKAWA ALPINE**

Operating conditions:

Maximum pressure: 0,7 bar absolute up to <1,5 bar g.

Maximum product temperature: 150° C.

Bulk solid data:

Powder form, up to medium hardness.

Free flowing up to limited flowing products.

Option 19: protective system, type SRVS1, shock pressure proof P_{red} 1 bar and flame propagation proof.

Type	Inlet / Outlet-Ø *)	Height	Volume / Round	Weight
SRVS1505C01A	Ø 150 mm	320 mm	4,5 dm ³	125 kg
SRVS2010C01A	Ø 200 mm	375 mm	9,4 dm ³	160 kg
SRVS2520C01B	Ø 250 mm	450 mm	19 dm ³	210 kg

*) Flange-outside-Ø and holes acc. to PN10 DIN2576

Basical version:

Housing: casted stainless steel 1.4408 (DIN) / CF-8M (AISI).

Rotor: welding construction – stainless steel 1.4307 (DIN) / 304L (AISI). 8 rounded pockets.

Outside bearings.

Shaft seal: radial shaft sealing rings with sealing / purge air connection.

Suitable for zone 20 inside category 1 according to ATEX 2014/34/EU.

With type examination test by a notified body.

Drive: direct.

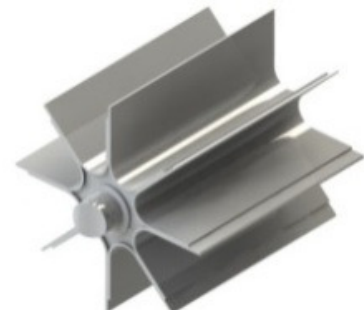
Motor: three-phase gearboxmotor.

Manufacturer: SEW, degree of protection IP55, thermal class 155(F), separately specified.

Form: slip on gear with torque arm.

Surface treatment:

Glass bead blasted and passivated.



approval	MIGSA		SST	
	Date: 06.04.20	sign: Ru	Date: 7.4.20	sign: Le

Preliminary
Modifications reserved



solids solutions group
www.solids.eu





Datasheet solids- Rotary Valve SRVS-Clean




Part of **HOSOKAWA ALPINE**

Options:

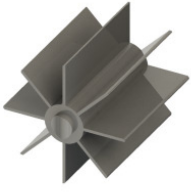
1. Rotor with adjustable polyurethane blades.

Size	V / turn
SRVS150	4 dm ³
SRVS200	7 dm ³
SRVS250	16 dm ³




2. Rotor with inelastic blades made of stainless steel 1.4307 (DIN) / 304L (AISI).

Size	V / turn
SRVS150	5 dm ³
SRVS200	10 dm ³
SRVS250	20 dm ³



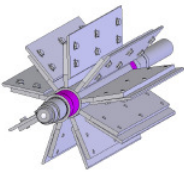
3. Rotor with reduced volume, about half of the standard volume made of stainless steel 1.4307 (DIN) / 304L (AISI).

Size	V / turn
SRVS150	2,4 dm ³
SRVS200	4,7 dm ³
SRVS250	9,7 dm ³

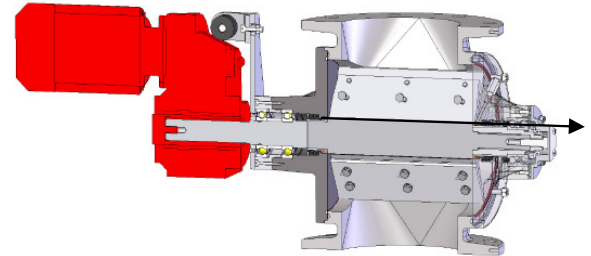


4. Rotor with adjustable blades made of stainless steel 1.4307 (DIN) / 304L (AISI).

Size	V / Turn
SRVS150	4 dm ³
SRVS200	7 dm ³
SRVS250	16 dm ³



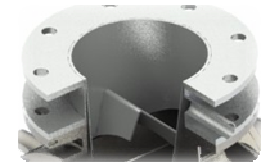
5. Removable rotor with divided shaft.



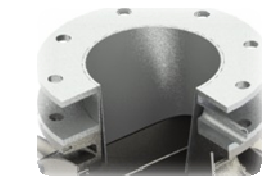
6. Inlet for granules, grain size >500 µm, made of stainless steel 1.4307 (DIN) / 304L (AISI). Incl. connection parts for assembling.



7. Leakage air collector with granule inlet, grain size > 500 µm, made of stainless steel 1.4307 (DIN) / 304L (AISI). Incl. connection parts for assembling.



8. Leakage air collector for non-granules, made of stainless steel 1.4307 (DIN) / 304L (AISI). Incl. connection parts for assembling.



9. Blowing shoe for pneumatic transport made of stainless steel 1.4307 (DIN) / 304L (AISI). Incl. connection parts for assembling.



solids solutions group
www.solids.eu



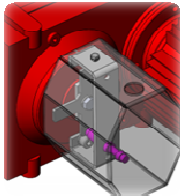


Datasheet solids- Rotary Valve SRVS-Clean



Part of **HOSOKAWA ALPINE**

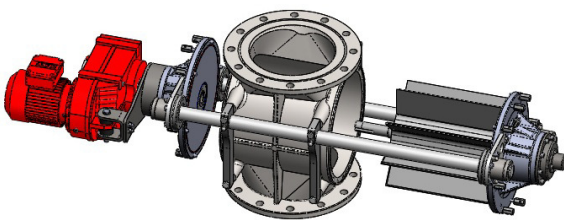
- 10. Casted parts made of 1.4408 (DIN) / CF-8M (AISI) rest 1.4404 (DIN) / 316L (AISI), according to the selected rotor options. Incl. leakage air collector/ granule inlet/ blowing shoe.
- 11. Casted parts made of 1.4408 (DIN) / CF-8M (AISI) rest 1.4571 (DIN) / 316Ti (AISI), according to the selected rotor options. Incl. leakage air collector/ granule inlet/ blowing shoe.
- 12. Standstill monitoring with star and sensor.



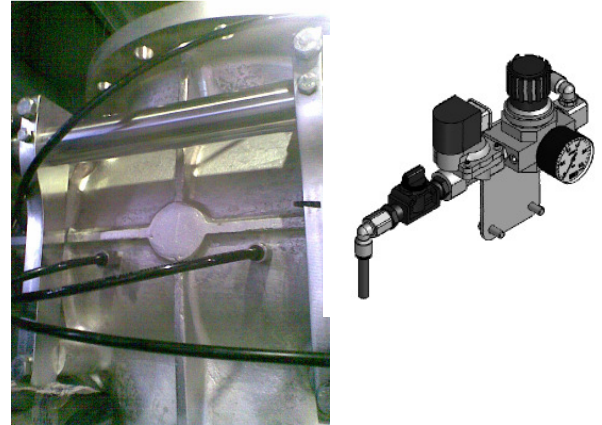
- 13. Pneumatic installation for sealing/purge air, consisting of 2/2-way solenoid valve, pressure regulator and nozzles.



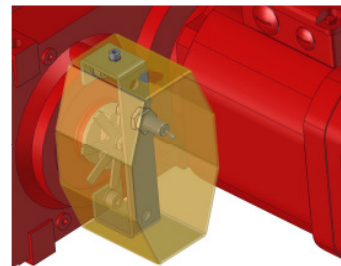
- 14. Pull out device with leading rails made of tempered steel with hard chromium surface (only in combination with option 5).



- 15. Pneumatic discharge of the pockets for cohesive products, incl. pneumatic installation.



- 16. Dosing-stop by switching-off-positioning of the rotor with 8-finger-star and sensor.



- 17. Electrical parts outside, suitable for zone 2/22.
- 18. Electrical parts outside, suitable for zone 1/21.
- 19. **Protective system, type SRVS1, shock pressure proof P_{red} 1 bar and flame propagation proof. Up to 20 turn/min. Data like table of the basical version, rotor like described in the basical version, not for metal dusts. Certificate number FTZÚ 18 ATEX 0126X.**



solids solutions group
www.solids.eu





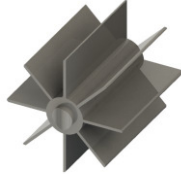
Datasheet solids- Rotary Valve SRVS-Clean



Part of **HOSOKAWA ALPINE**

19.1. Rotor with inelastic blades, made of stainless steel 1.4307 (DIN) / 304L (AISI).

Size	V / Turn
SRVS150	5 dm ³
SRVS200	10 dm ³
SRVS250	20 dm ³



19.2. Rotor with reduced volume, about half of the standard volume made of stainless steel 1.4707 (DIN) / 304L (AISI).

Size	V / Turn
SRVS150	2,4 dm ³
SRVS200	4,7 dm ³
SRVS250	9,7 dm ³



20.3. **Hard chrome plating:** metallic film of chrome. Obtained film: 100 µm. Obtained hardness: 900 HV. Treatment applied to body and caps, rotor with nitriding treatment.

20.4. **Tungsten carbide:** metallic ceramic film. Obtained film: 300 µm. Obtained hardness: 800 HV. Treatment applied to body, caps and rotor.

20. Wear protection treatment for housing, caps and rotor.

20.1. **Nitriding:** heat treatment by absorption. Penetrates until 50 µm. Obtained hardness: between 600 and 1000 HV. Treatment applied to body, caps and rotor.

20.2. **Electroless nickel plating:** metallic film of NiP. Obtained film: between 25 and 35 µm. Obtained hardness: between 550 and 650 HV. Treatment applied to body and caps, rotor with nitriding treatment.

Related documents:

3D-Part: Type.step (example : **SRVS15005C01**. Step)

2D-planning drawing: Type.dxf (example: **SRVS15005C01**. dxf)

Selection criteria: SG- ZRS-SRV-DBS

Pricelist: PL-SRVS-Clean

List of drawing numbers: Draw-No-List_SRVS-Clean



solids solutions group
www.solids.eu

